



SCALA2



<http://qr.grundfos.com/i/scala2install>

be
think
innovate

GRUNDFOS 



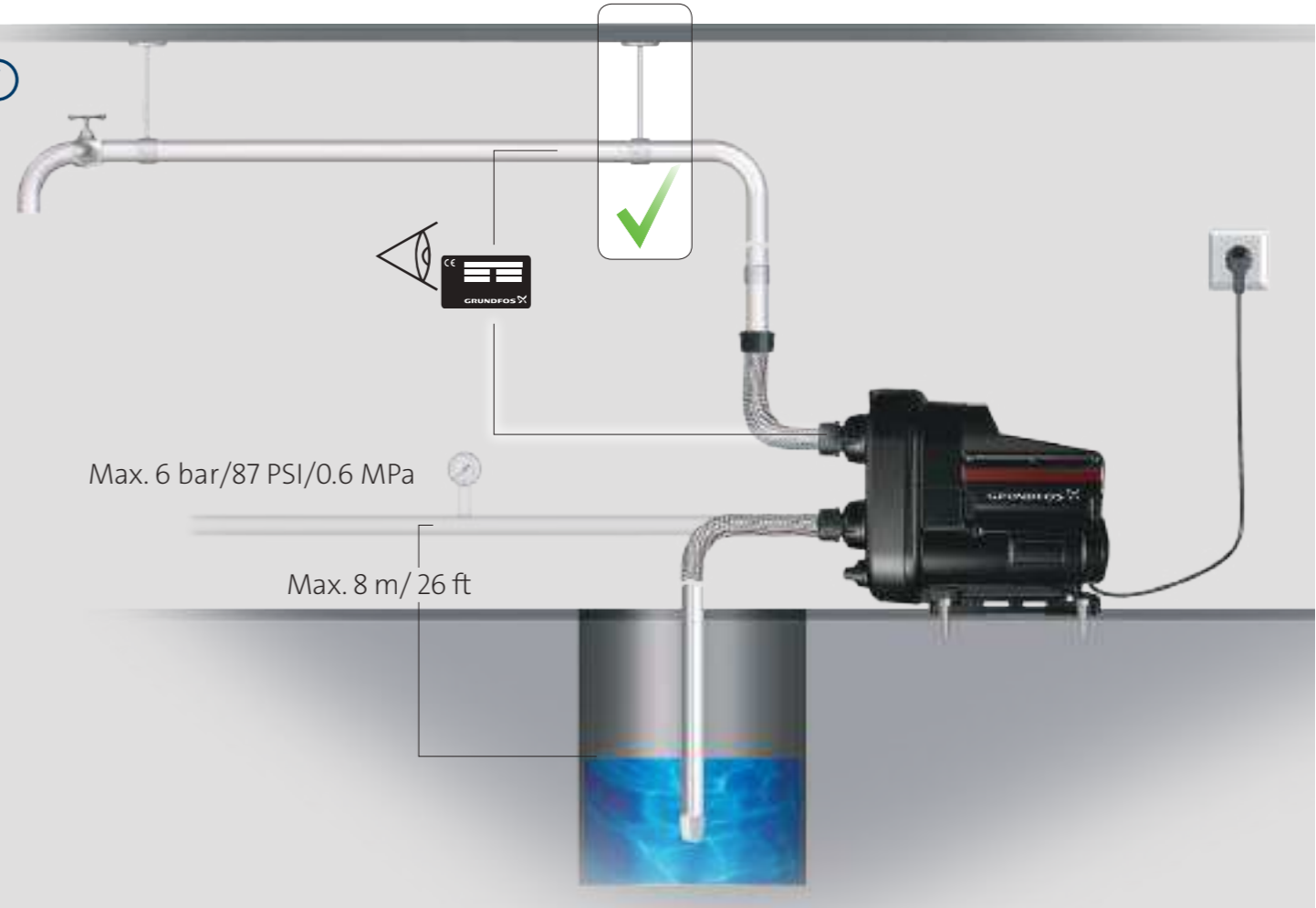
PN10:
Max. 10 bar/1.0 MPa

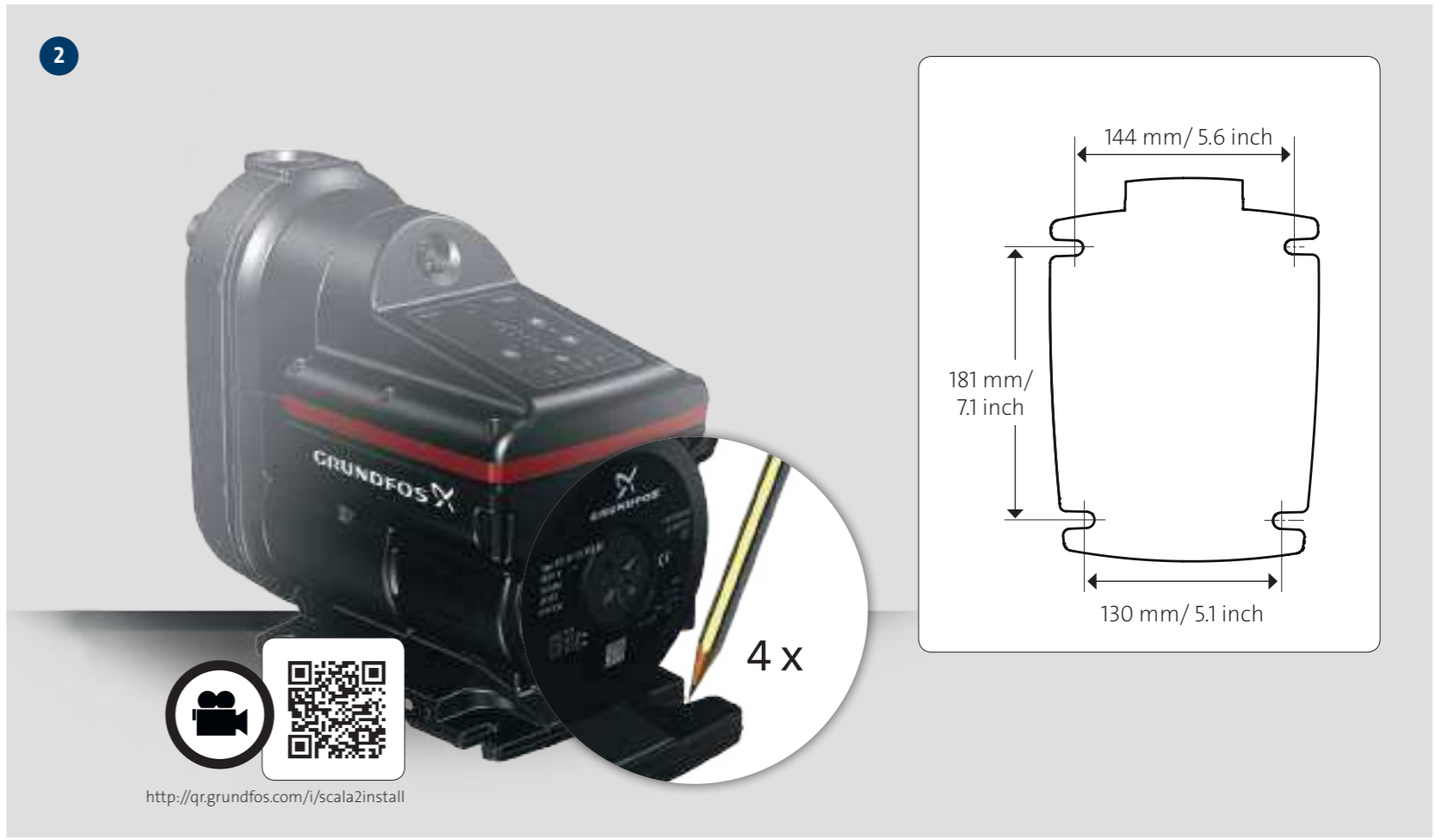
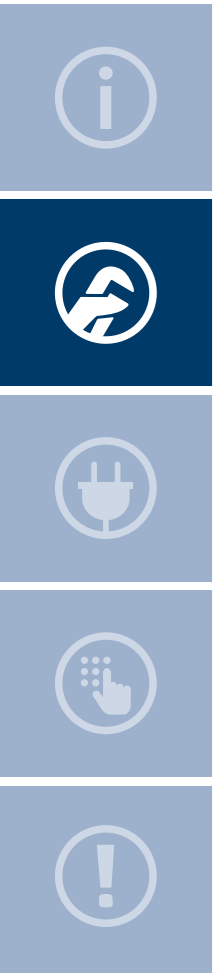


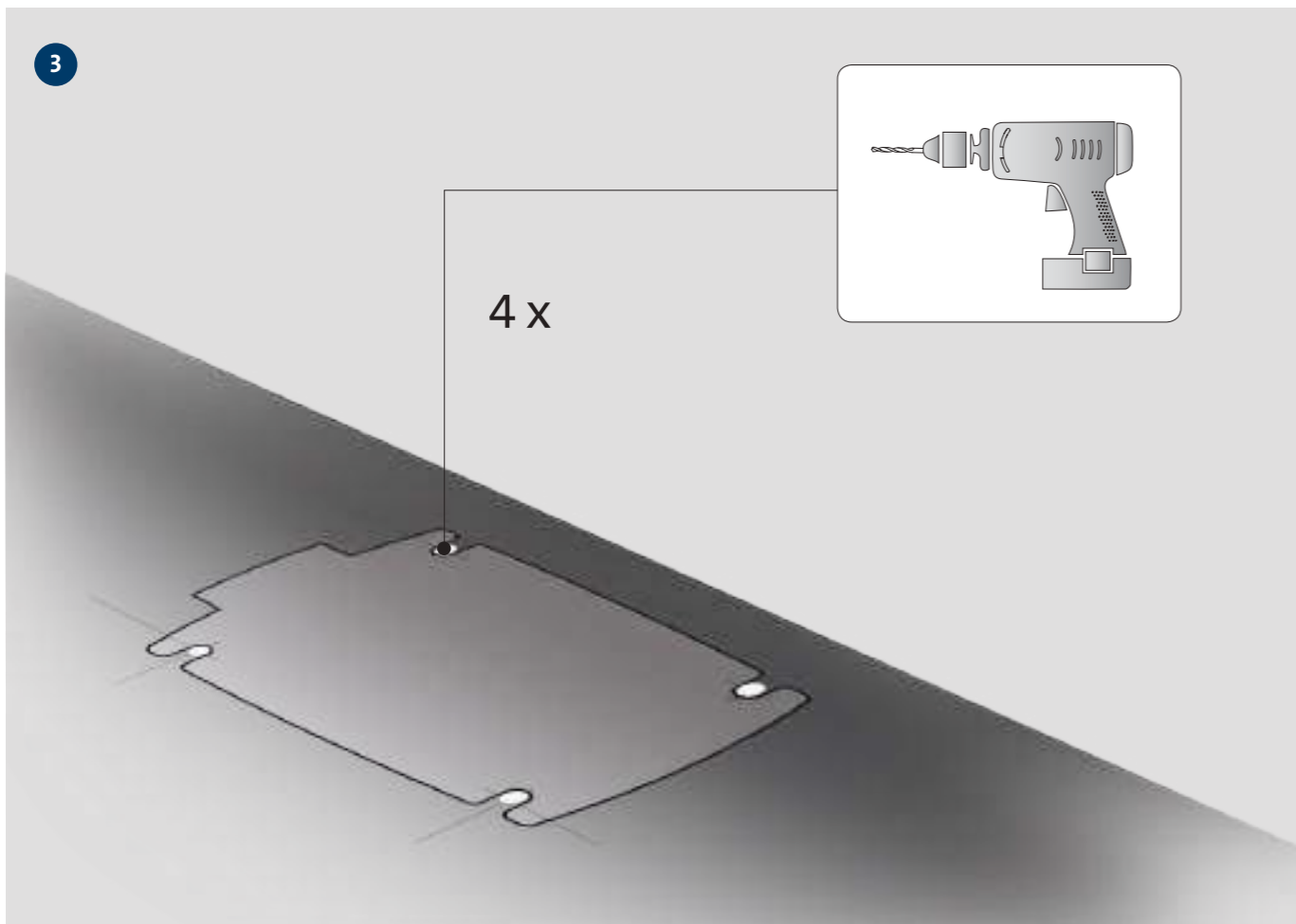
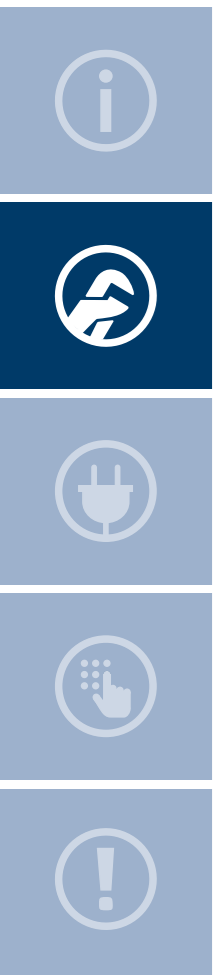
- Voltage
- Ambient temperatur

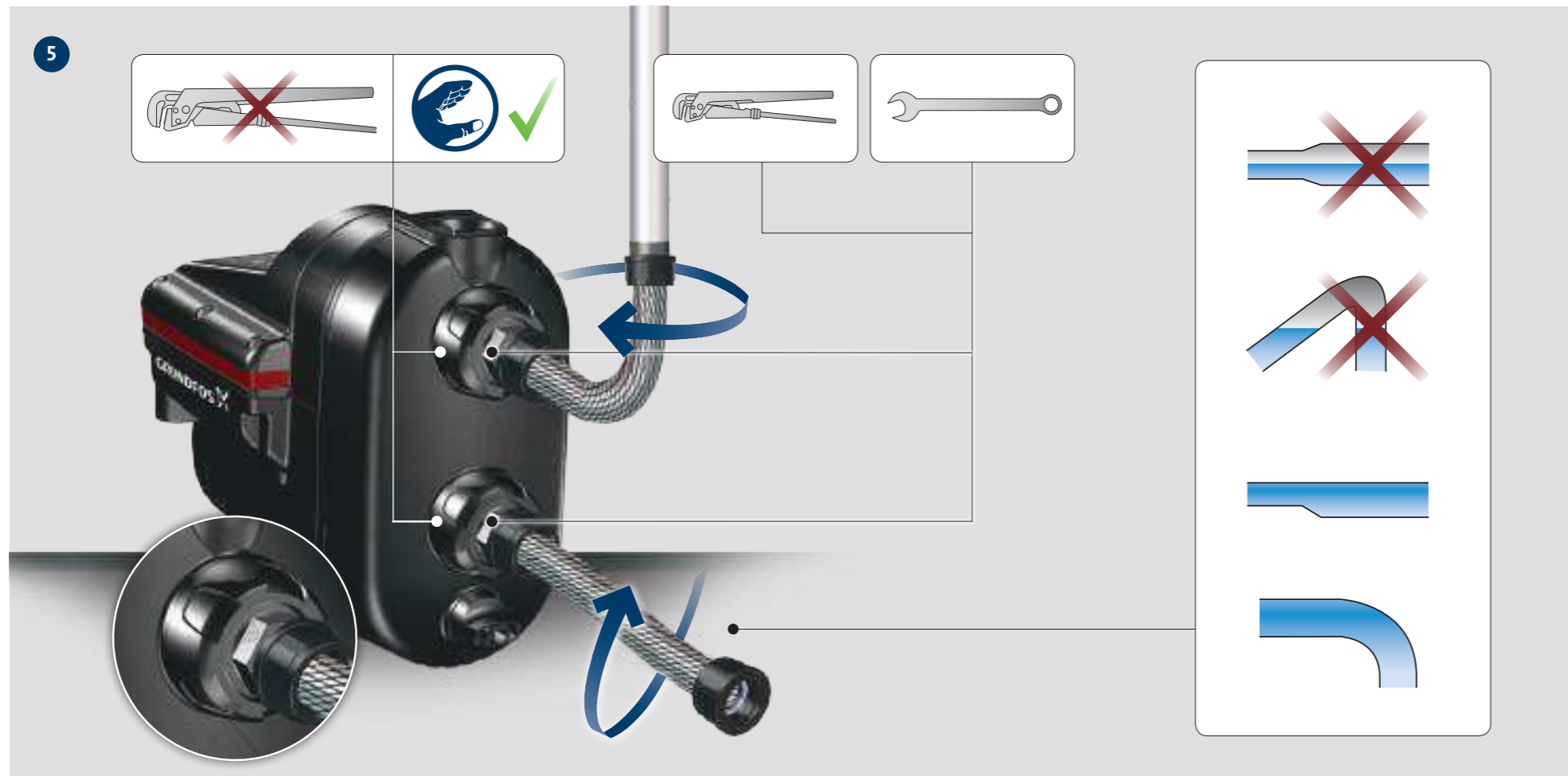
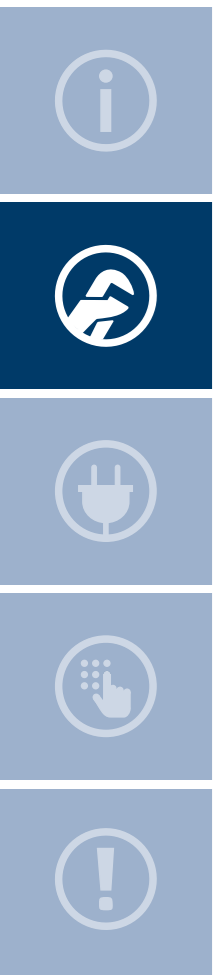


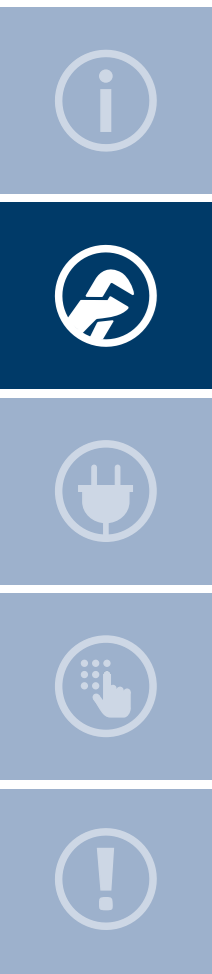
Min./Max.
0 °C - + 45 °C/
32 °F - + 113 °F

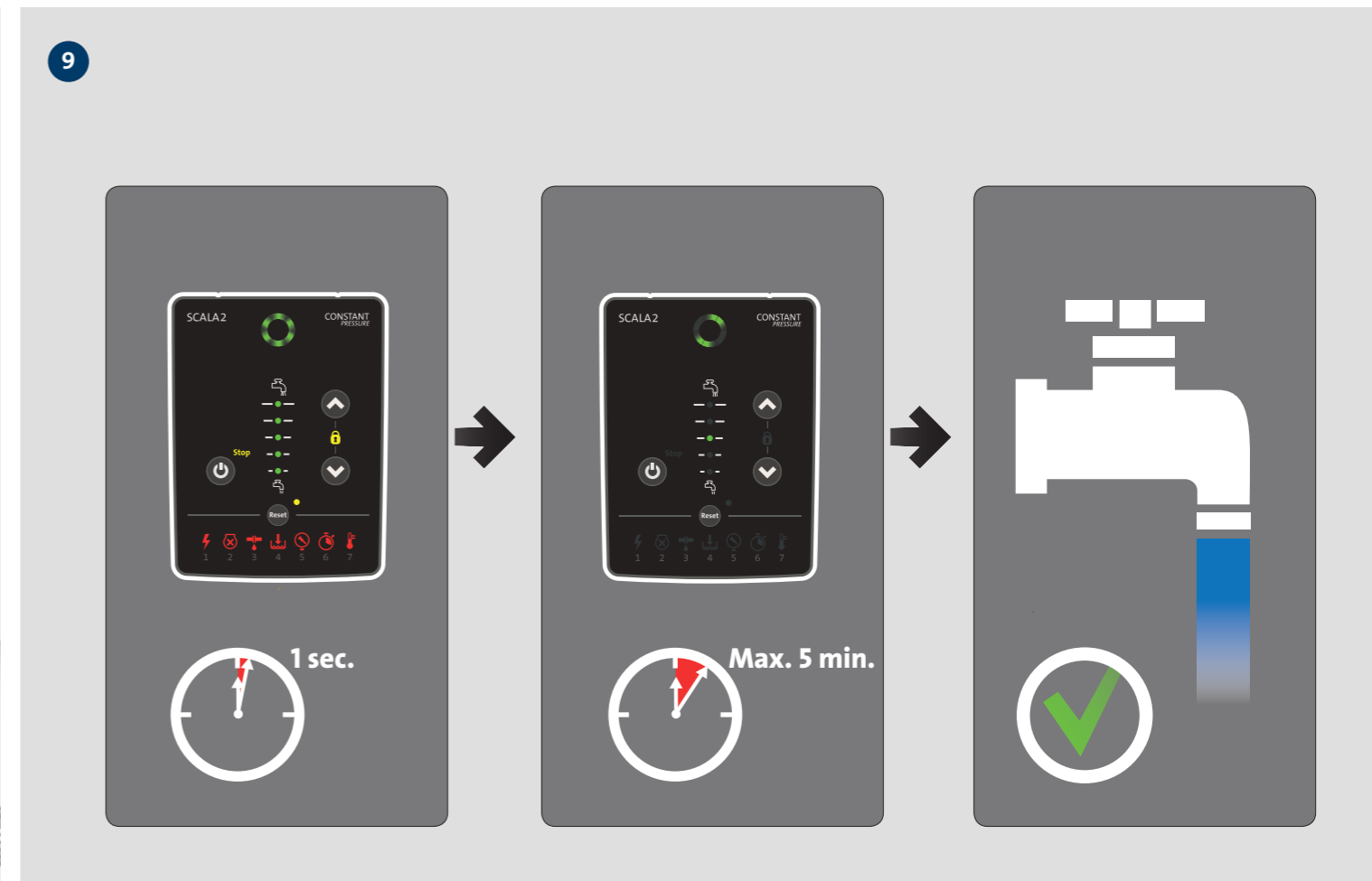
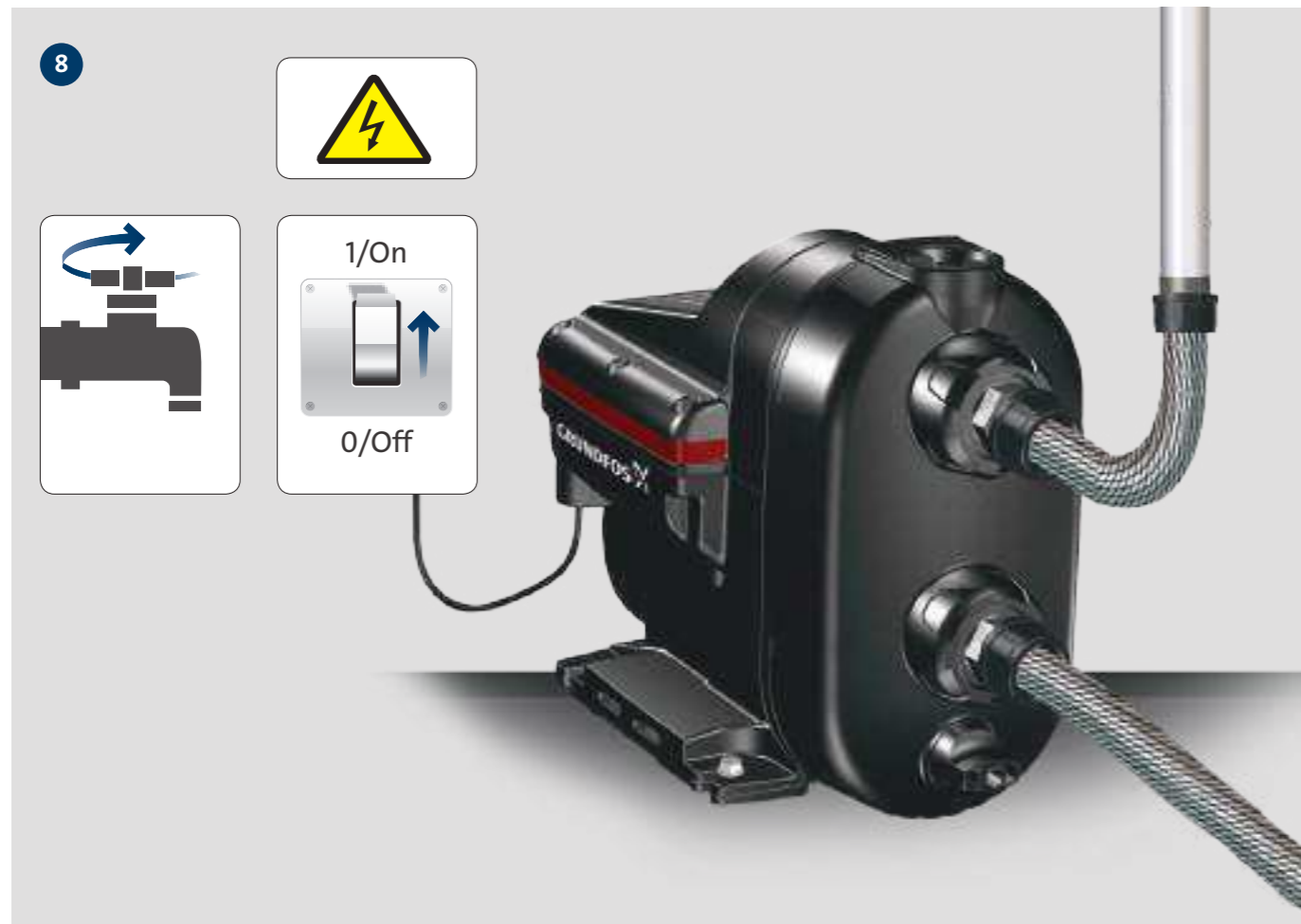
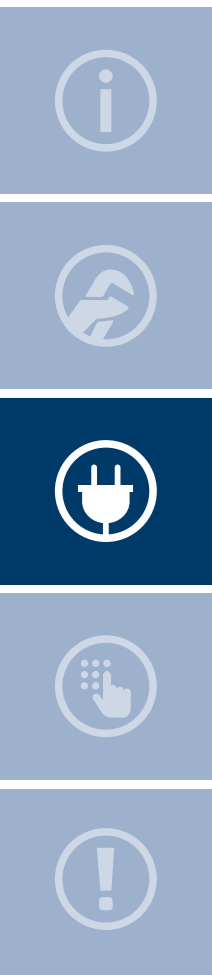


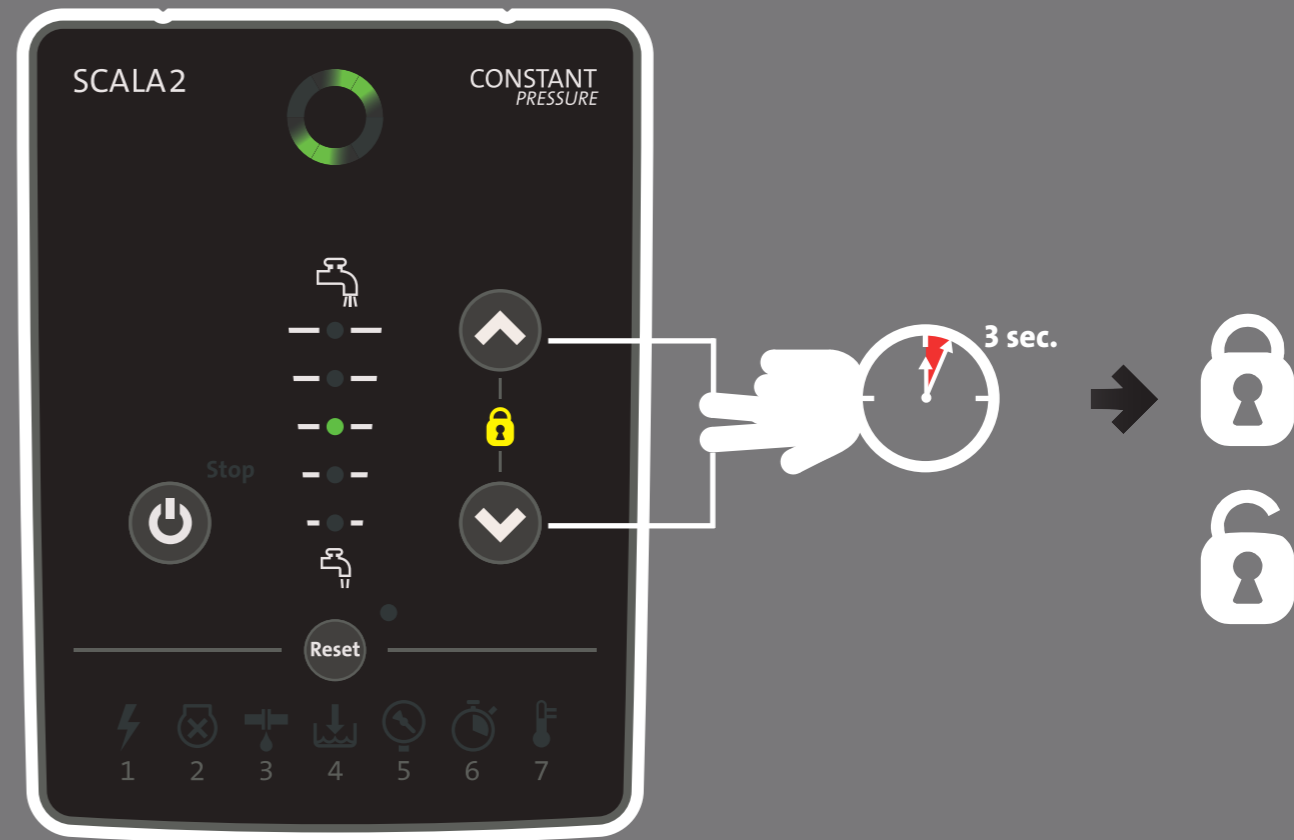
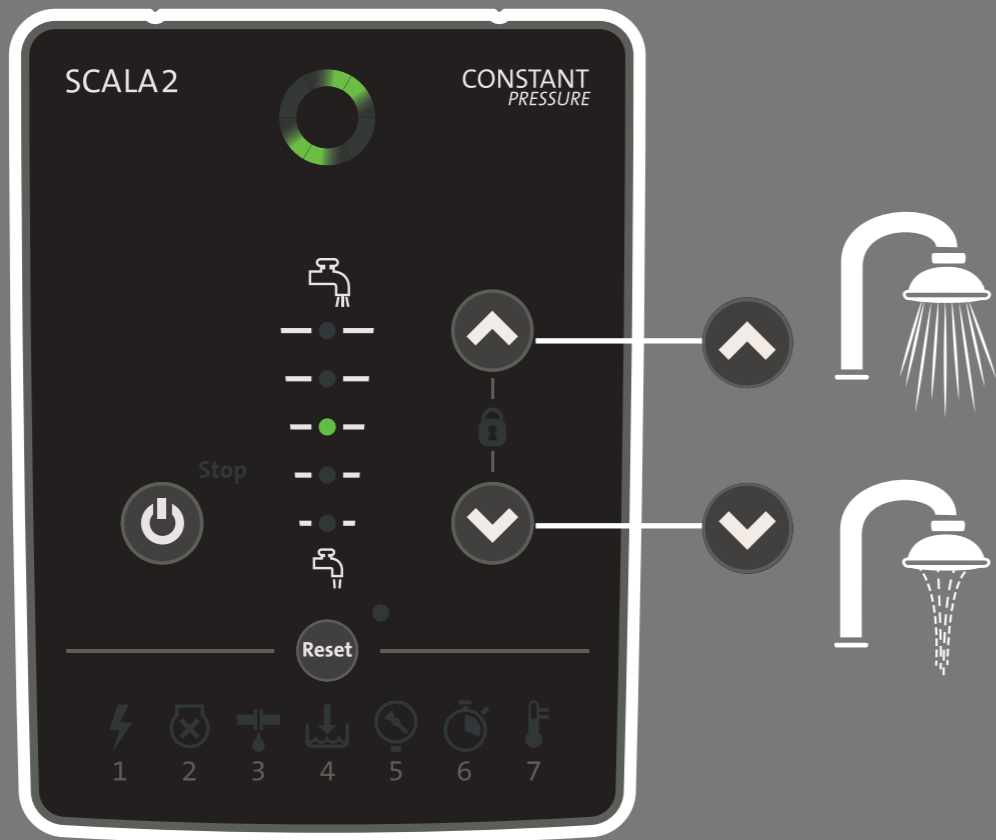
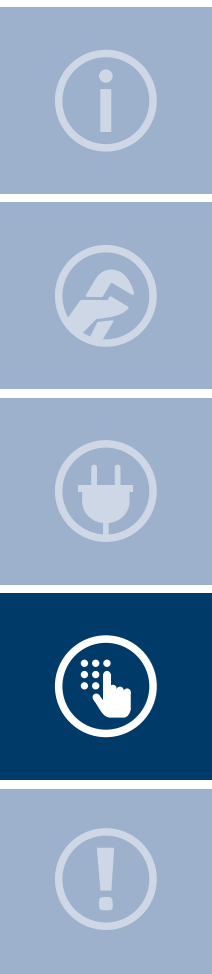


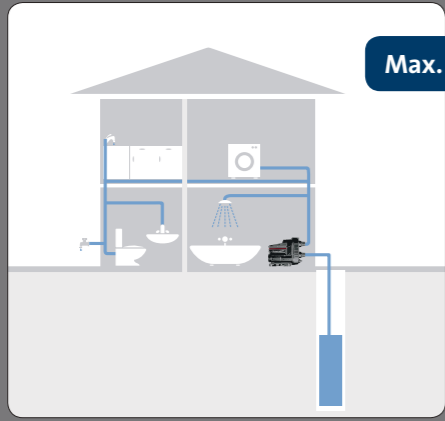
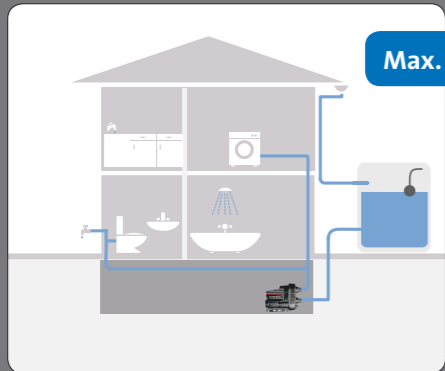
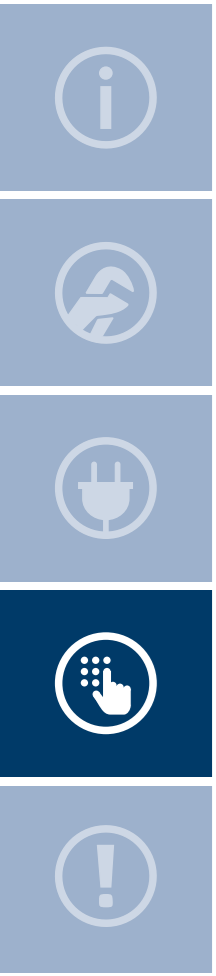




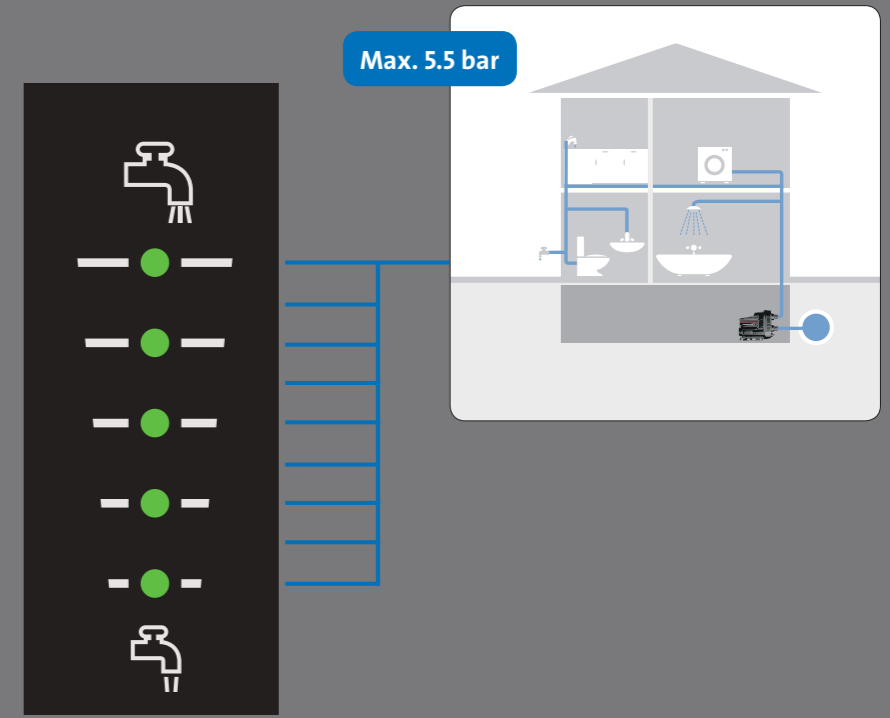


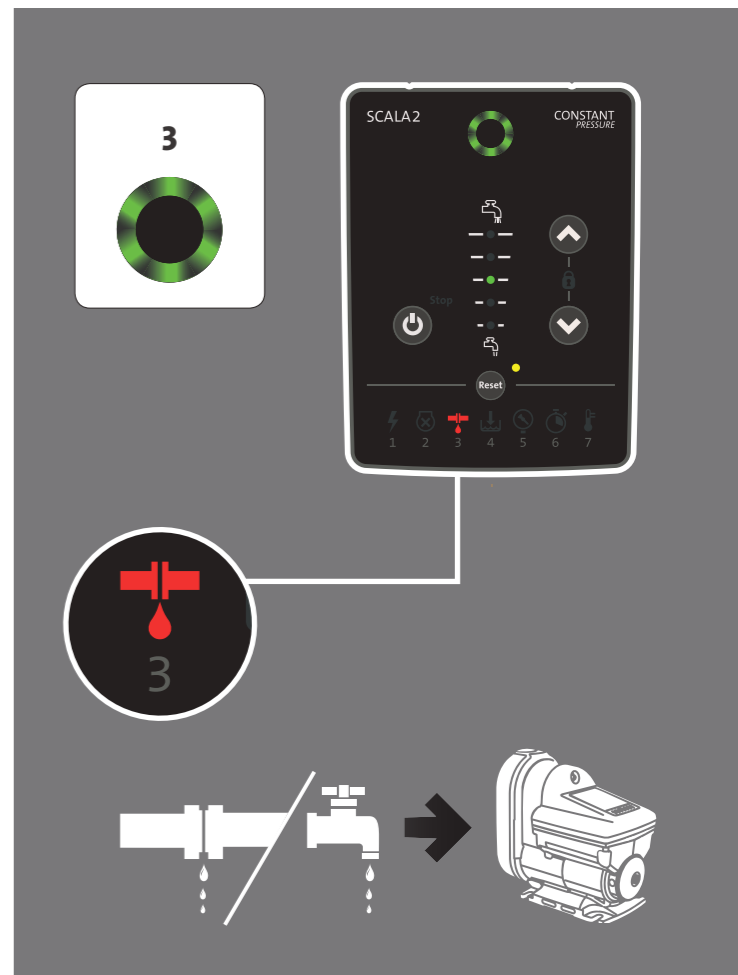
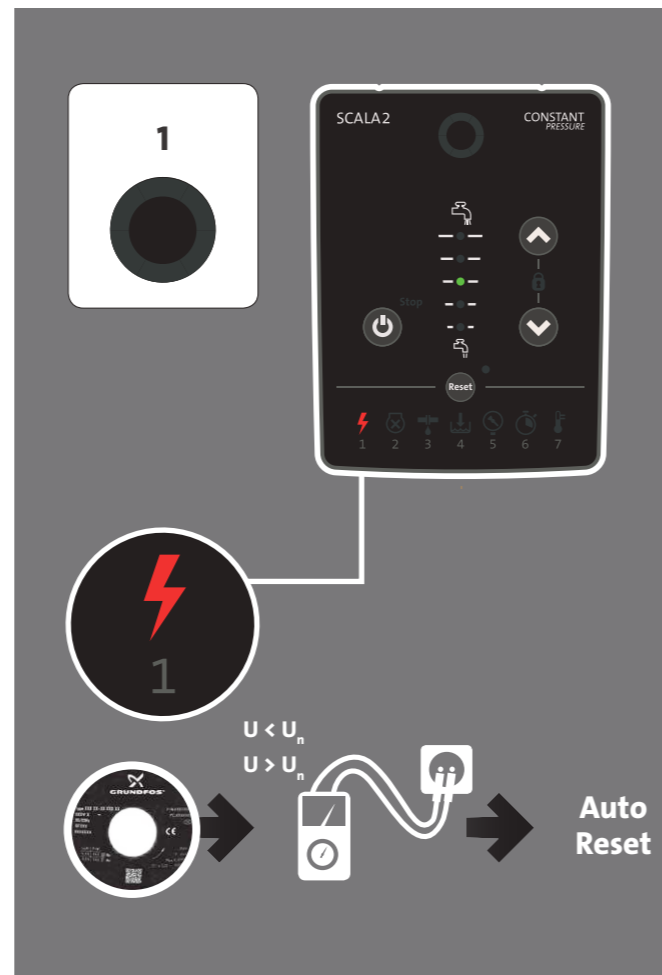
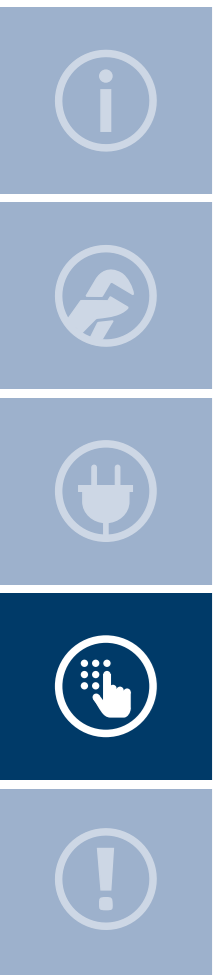


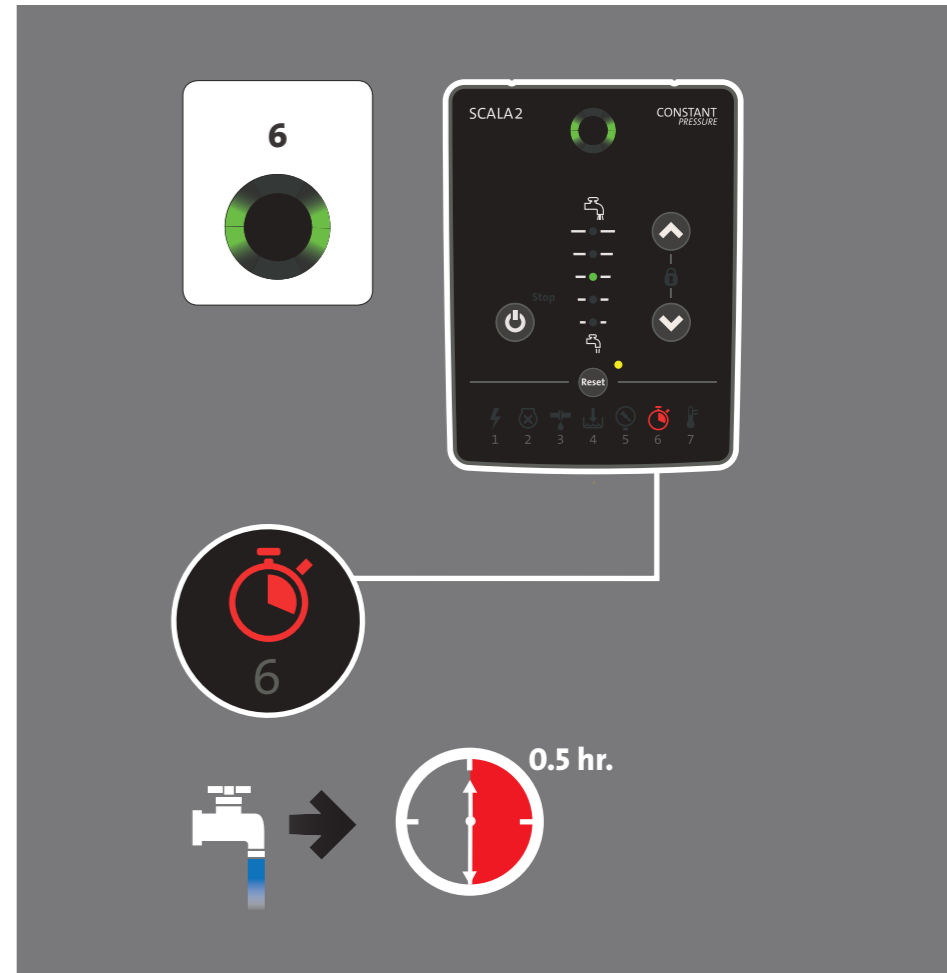
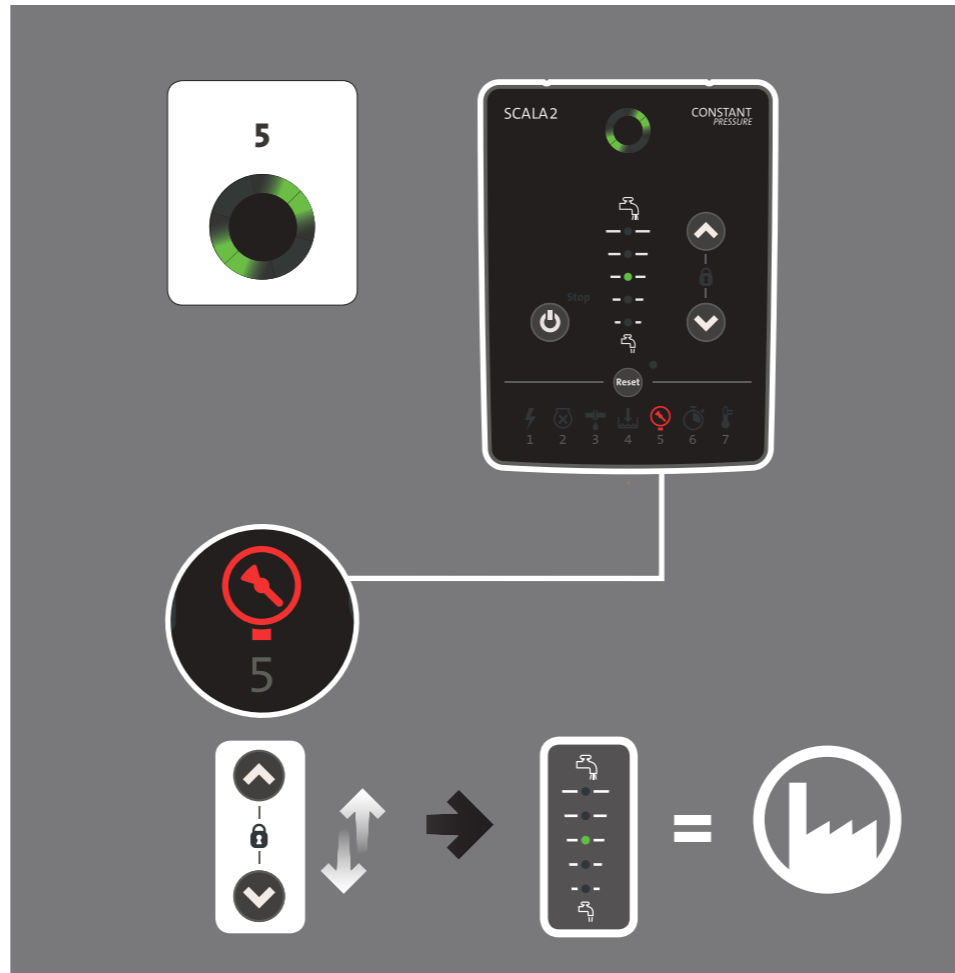
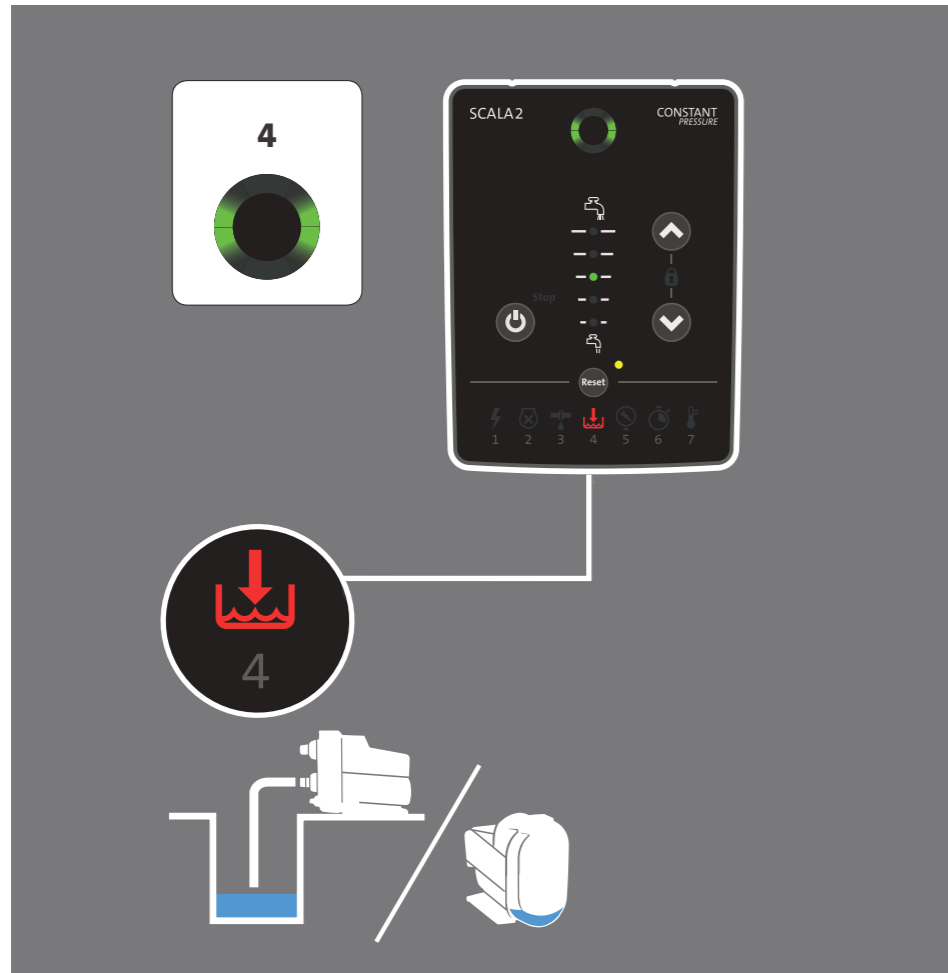
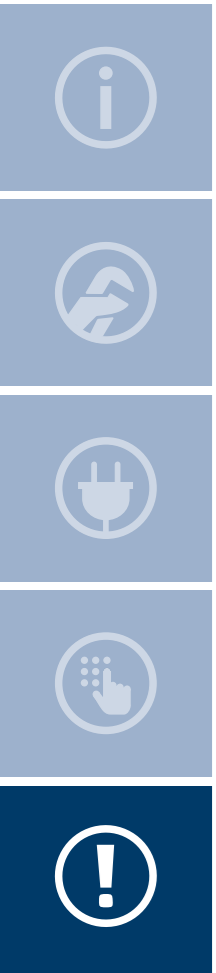


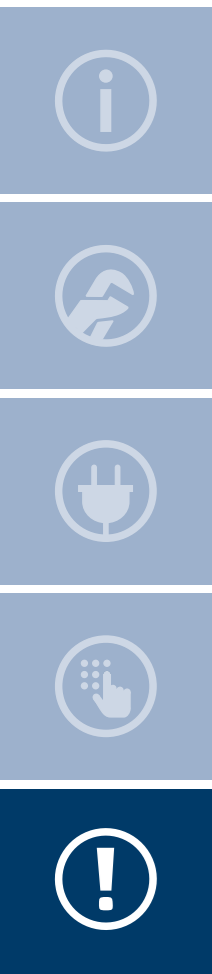


	BAR	PSI	Water colum [m] / [ft]	kPa	MPa
●	5.5	80	55/180	550	0.55
●	5.0	73	50/165	500	0.50
●	4.5	65	45/150	450	0.45
●	4.0	58	40/130	400	0.40
●	3.5	51	35/115	350	0.35
●	3.0	44	30/100	300	0.30
●	2.5	36	25/80	250	0.25
●	2.0	30	20/65	200	0.20
●	1.5	22	15/50	150	0.15









7

7

22

1 2 3 4 5 6 7

net.grundfos.com/qr/i/98880508

23

be think innovate

98501666 0517

ECM: 1203706

GRUNDFOS Holding A/S

Poul Due Jensens Vej 7

DK-8850 Bjerringbro

Tel: +45 87 50 14 00

www.grundfos.com

GRUNDFOS


The name Grundfos, the Grundfos logo, and be think innovate are registered trademarks owned by Grundfos Holding A/S or Grundfos A/S, Denmark. All rights reserved worldwide.