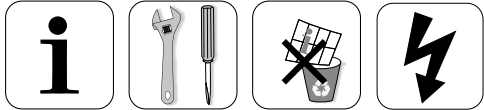
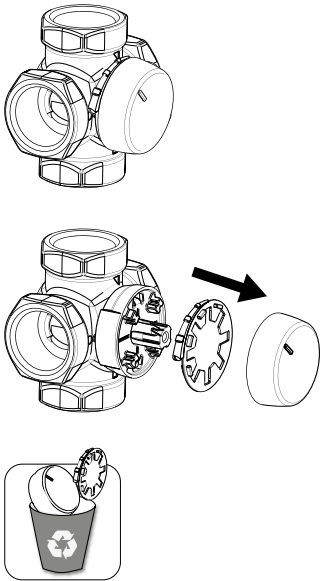
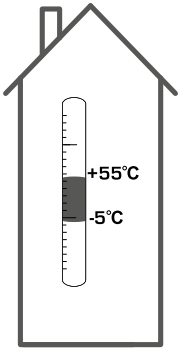


# ESBE SERIES ARA600 3-Point



Series ARA6x1  
Series ARA6x2  
Series ARA6x3  
Series ARA6x4

CE  
LVD 2014/35/EU  
EMC 2014/30/EU  
RoHS 2011/65/EU



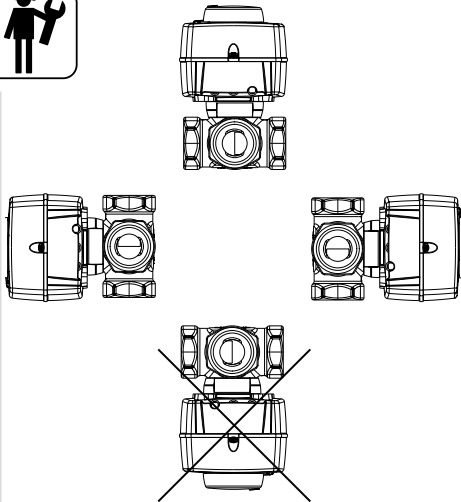
VRG, VRB, VRH      3MG, 4MG



3G, 4G      3F, 4F ≤ DN50      3HG, 4HG, 3H, 4H

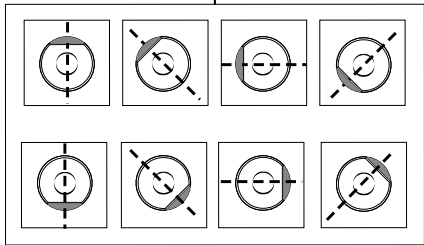
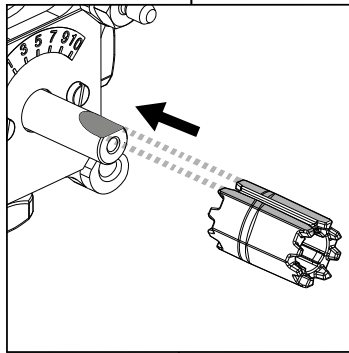
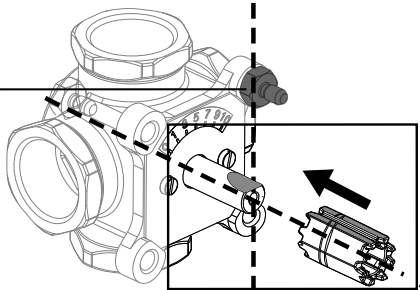


BIV      T, TM

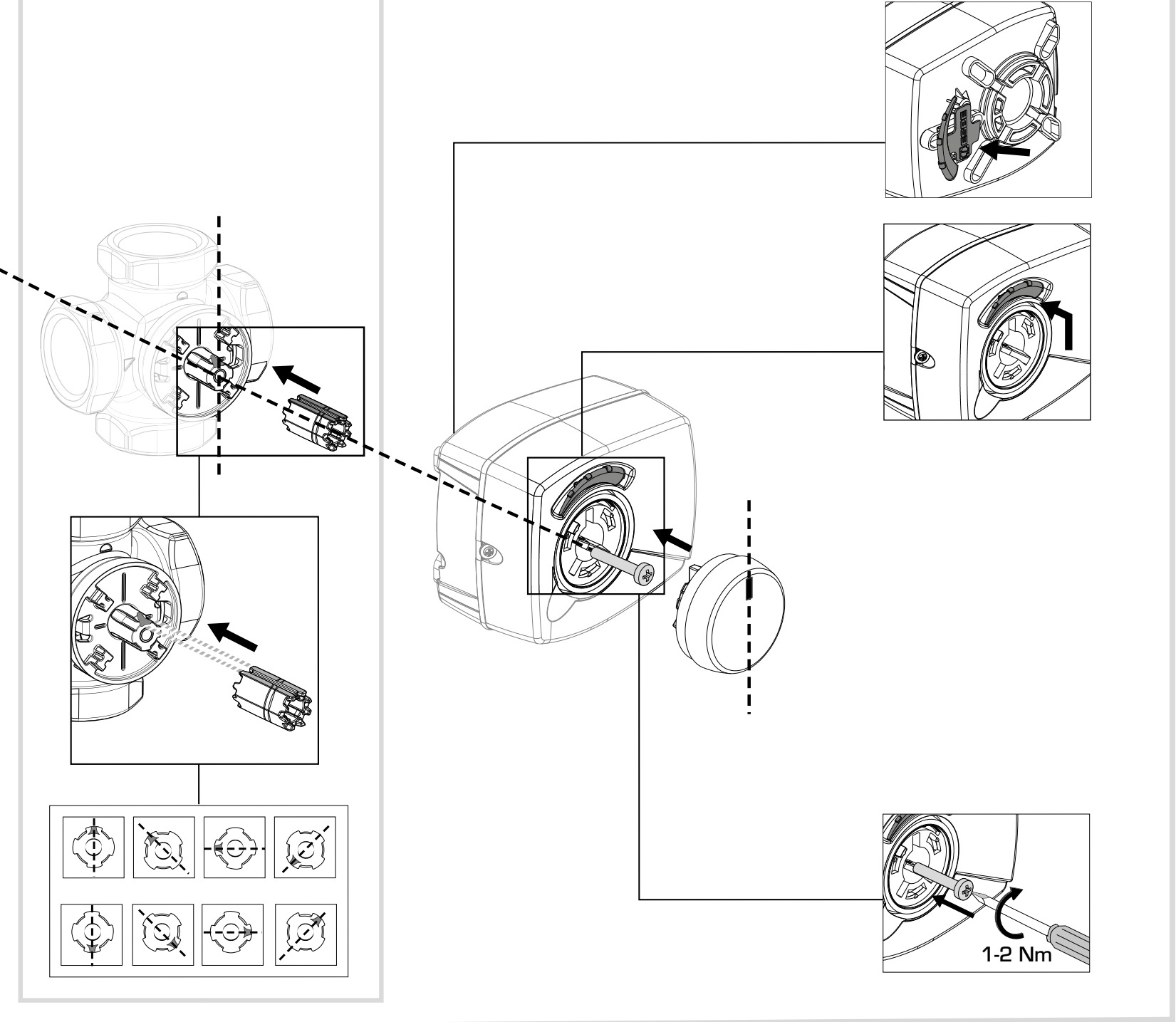


|  | DN15-25    |  |
|--|------------|--|
|  | DN20-40    |  |
|  | DN50       |  |
|  | DN20-25    |  |
|  | DN32-50    |  |
|  | H: DN25    |  |
|  | H: DN32-50 |  |
|  | HG: DN25   |  |
|  | DN20-22    |  |
|  | DN25       |  |
|  | T: DN20-32 |  |
|  | TM: DN20   |  |

## Series MG, G, F, H, HG, BIV, T, TM



Series VRGxxx, VRBxxx, VRHxxx



Mtrl.nr: 9814 02 75 • Rltn.nr: 8081 utg. H • Rev. 1607

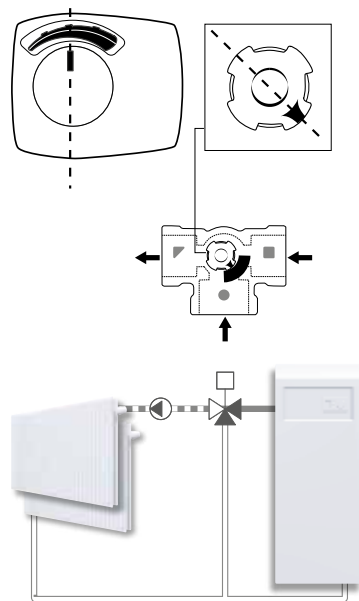


SERIES ARA600 3-Point

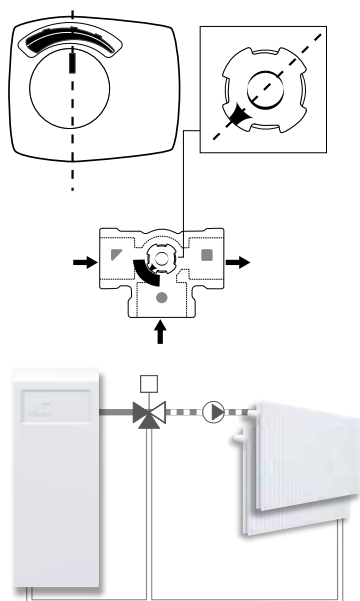


# SERIES VRG130

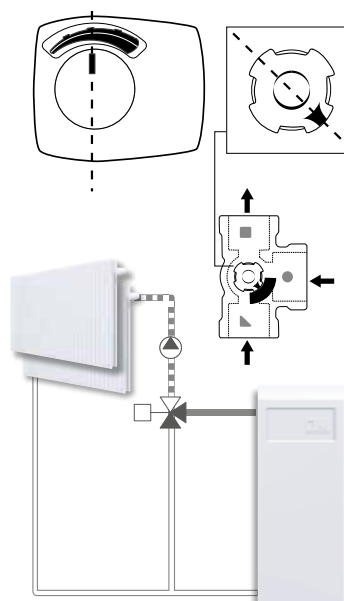
**a**



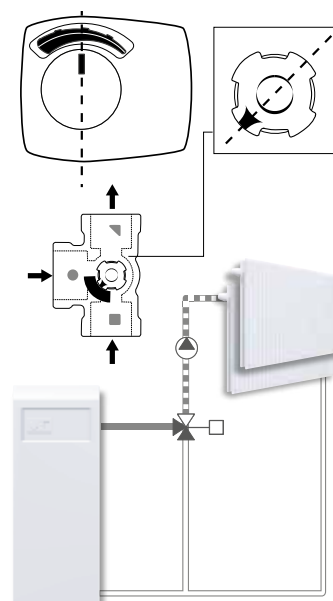
**b**



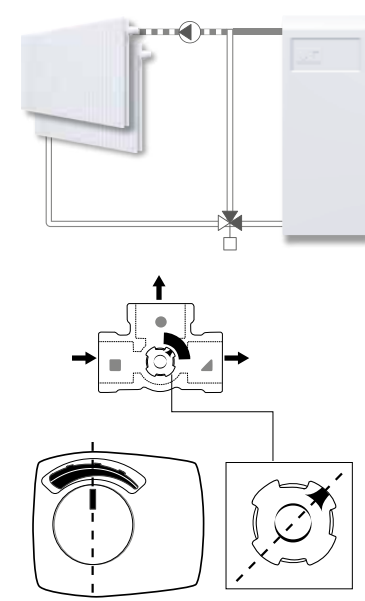
**c**



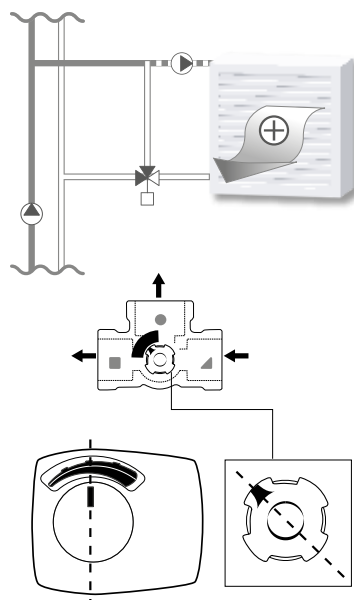
**d**



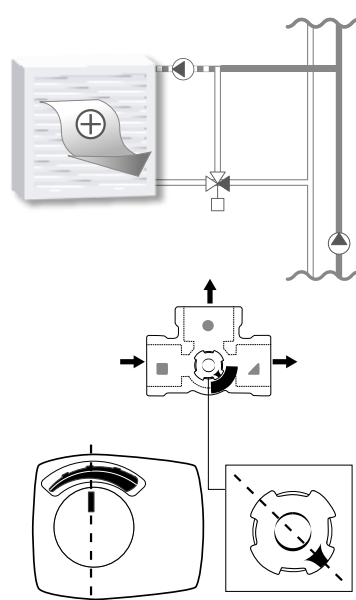
**e**



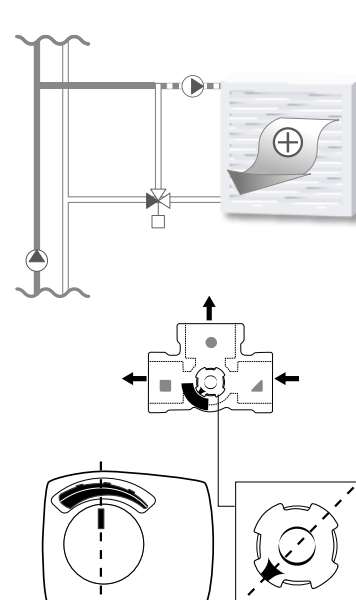
**j**



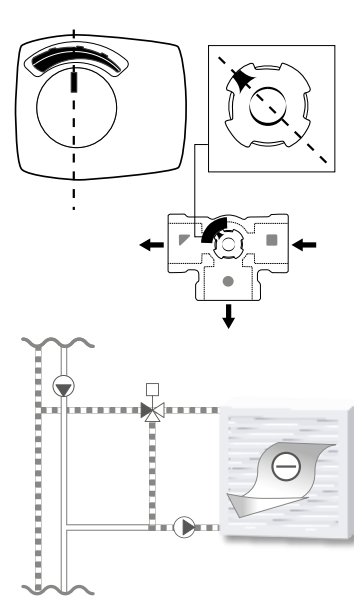
**k**



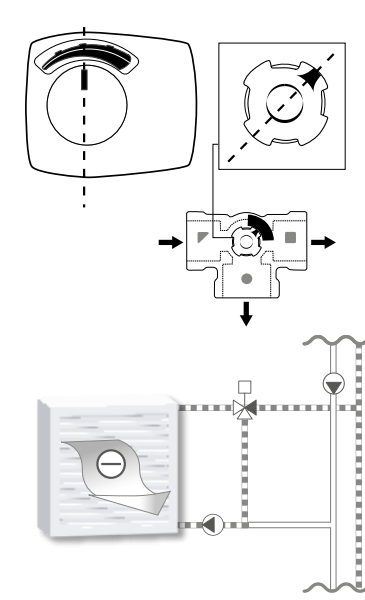
**l**

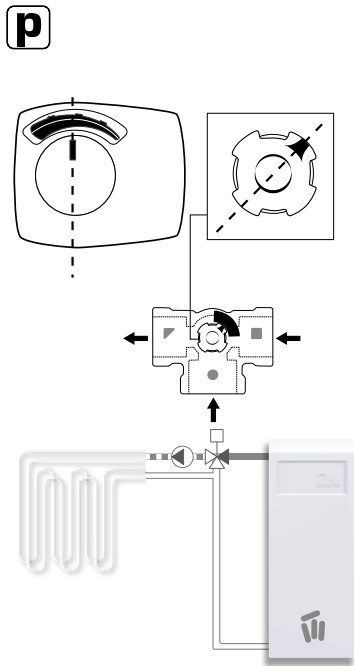
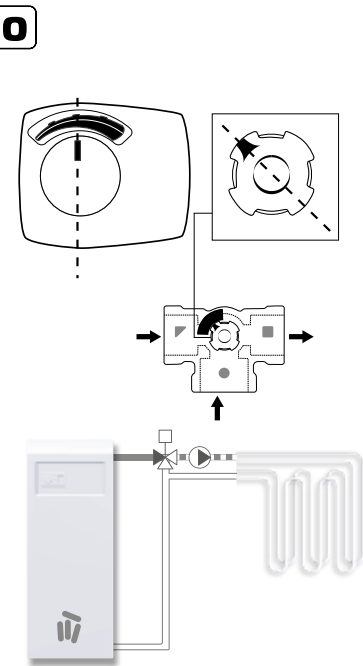
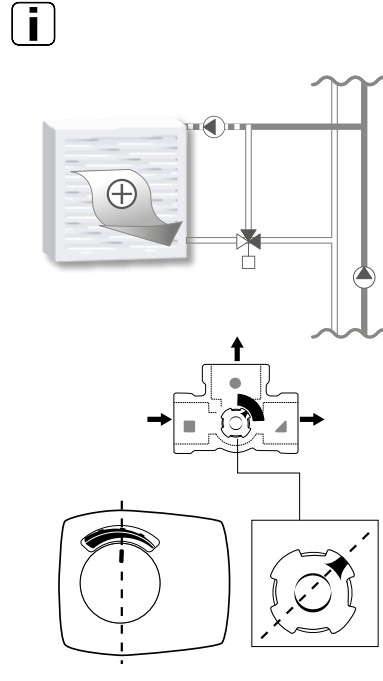
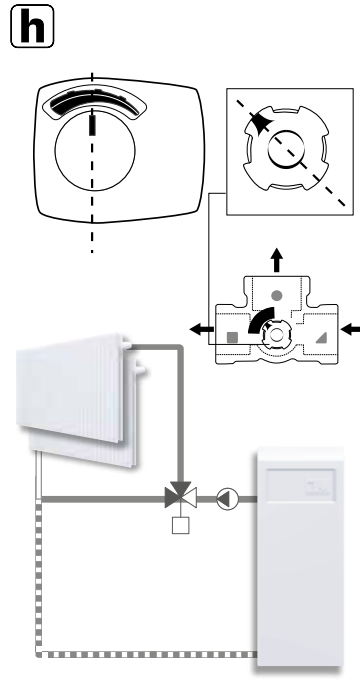
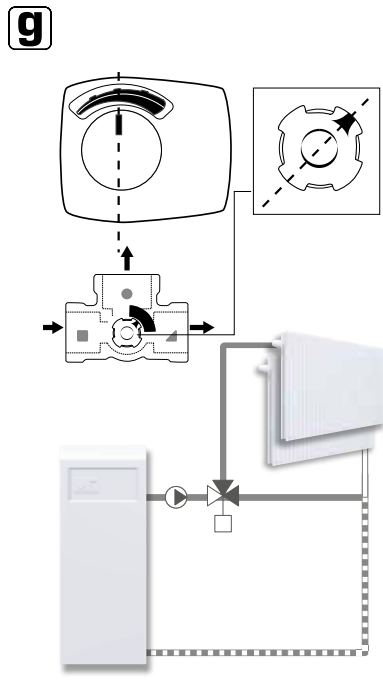
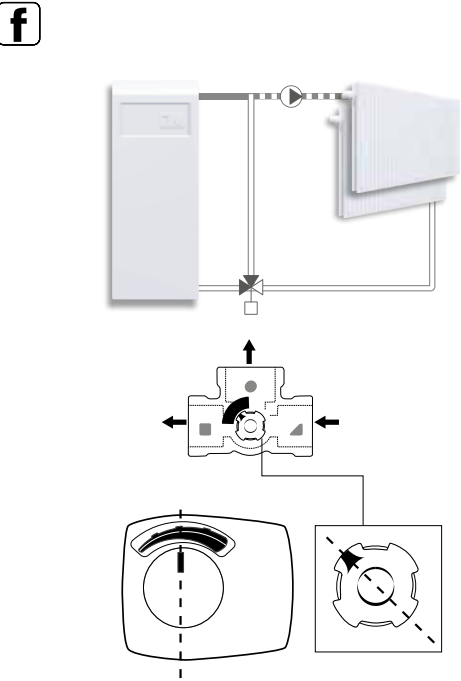


**m**

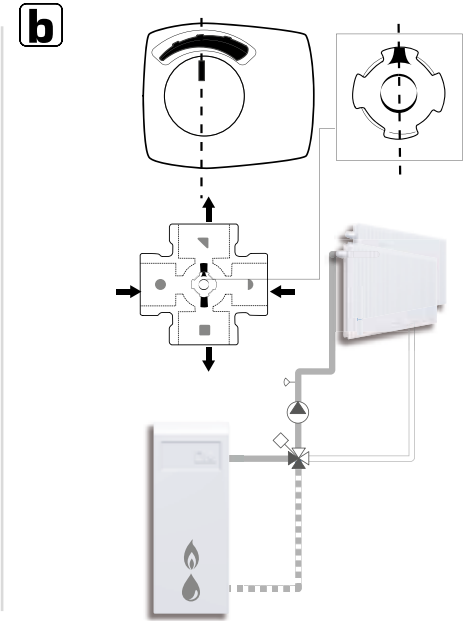
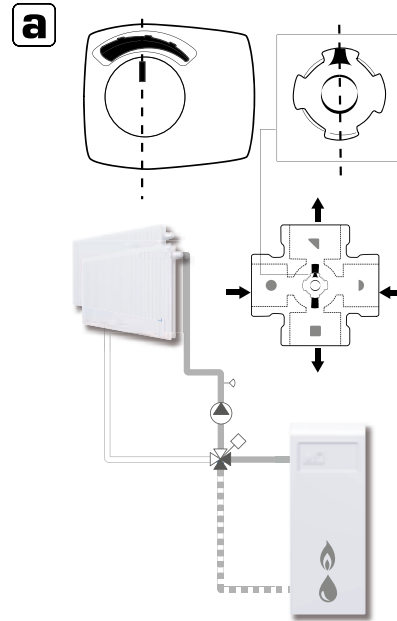


**n**

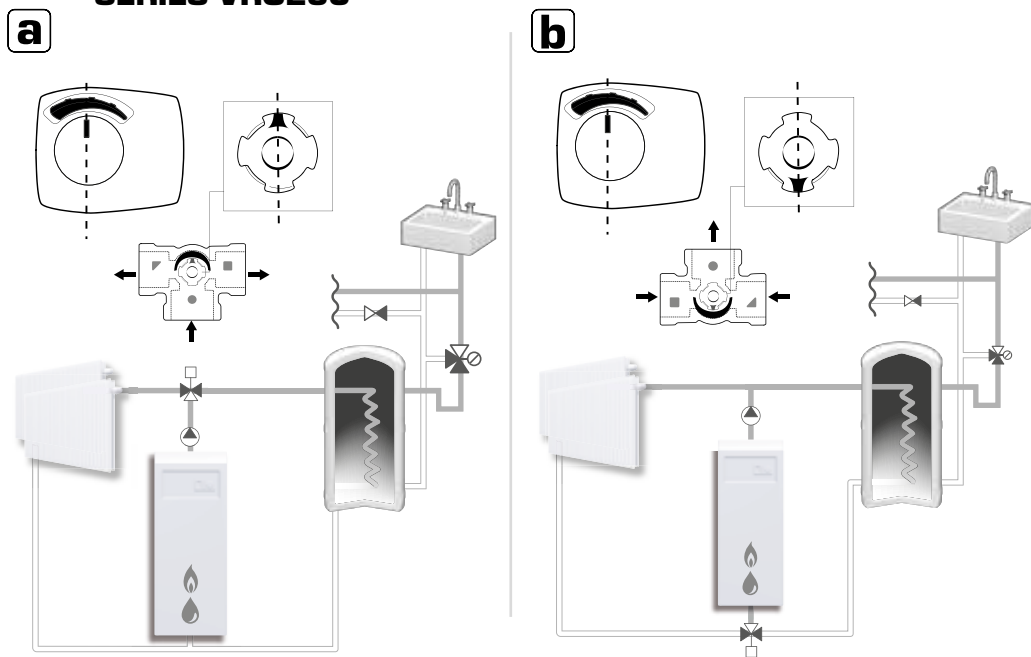




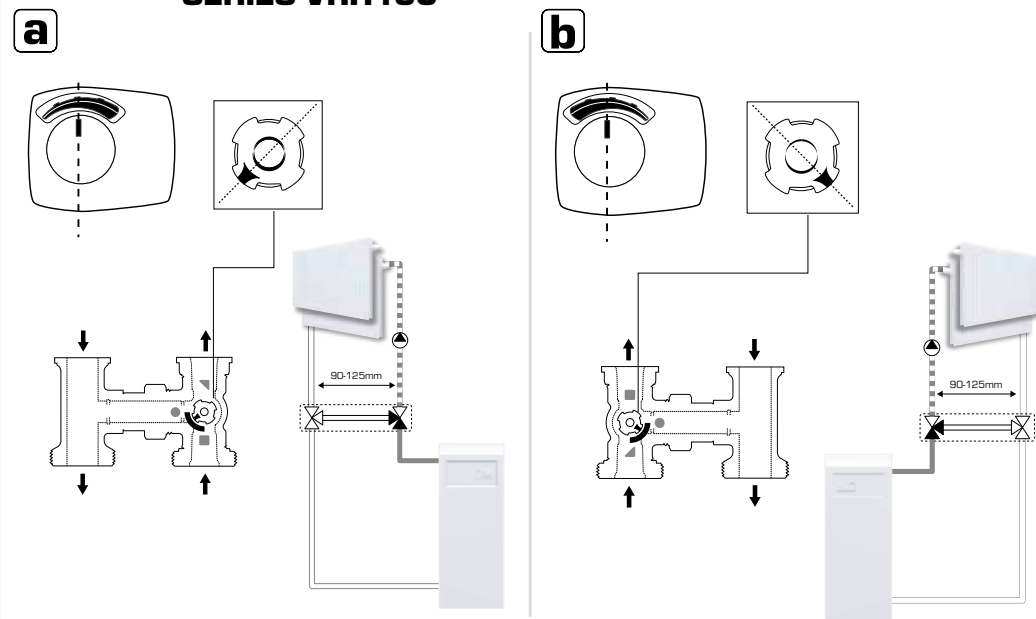
**SERIES VRG140**



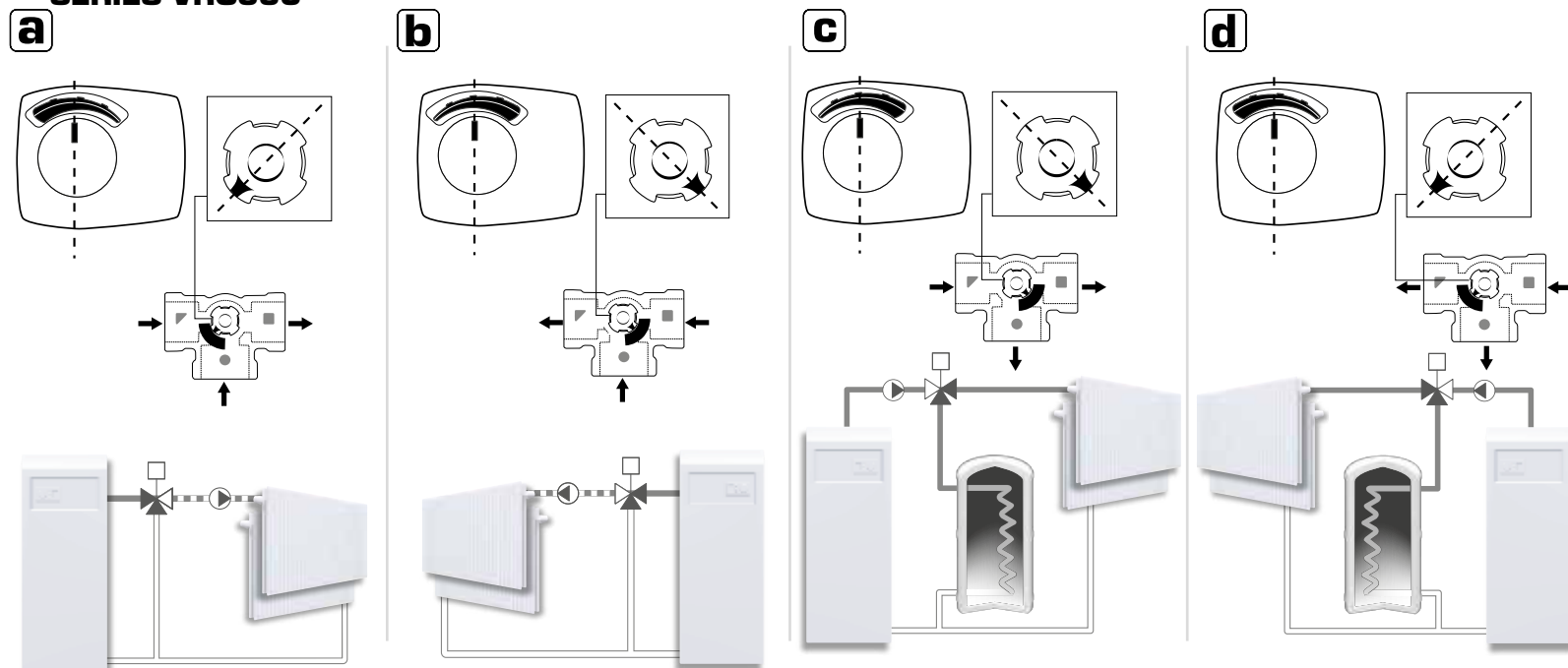
## SERIES VRG230



## SERIES VRH130

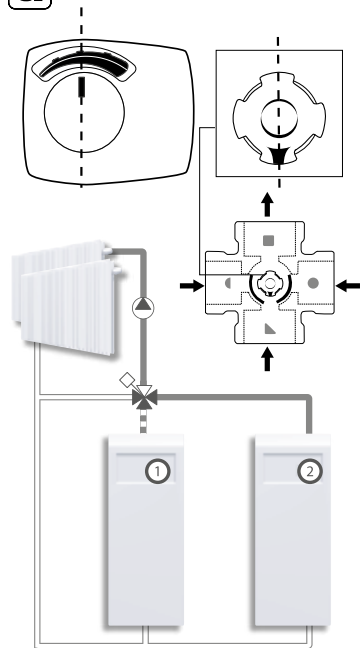


## SERIES VRG330

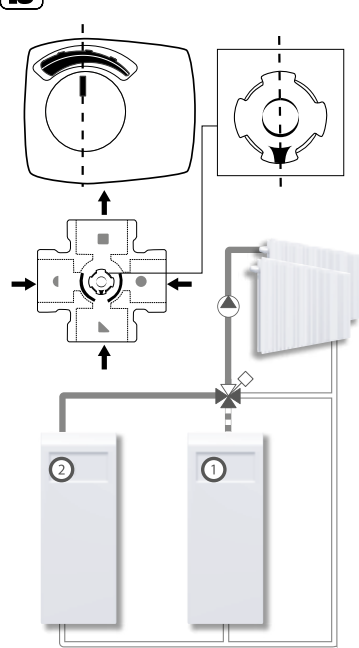


# SERIES VRB140

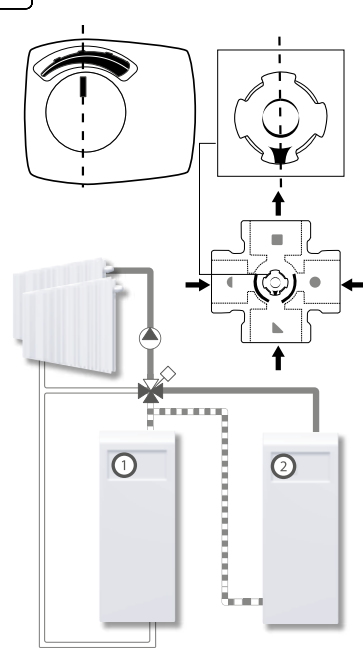
**a**



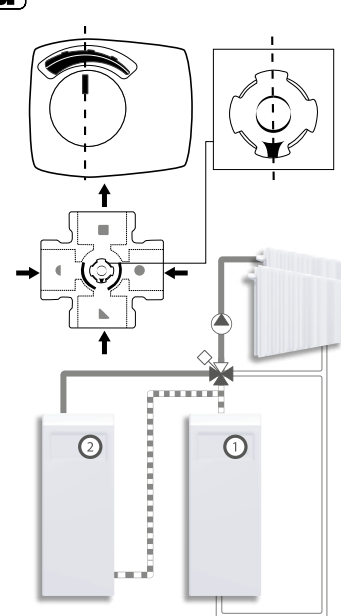
**b**



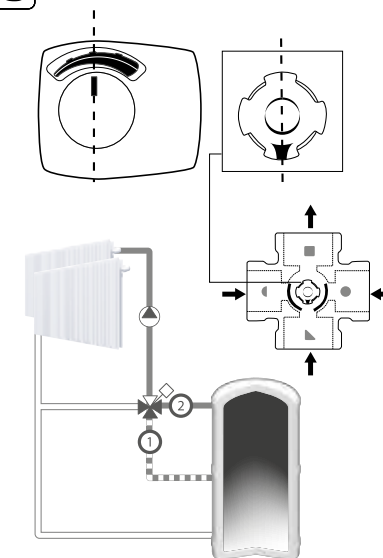
**c**



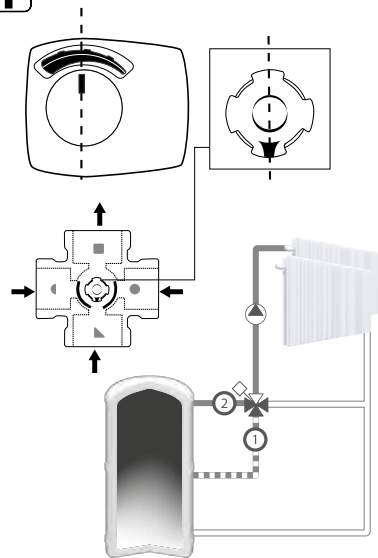
**d**



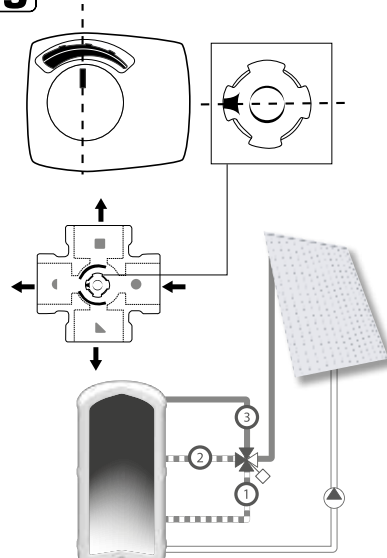
**e**



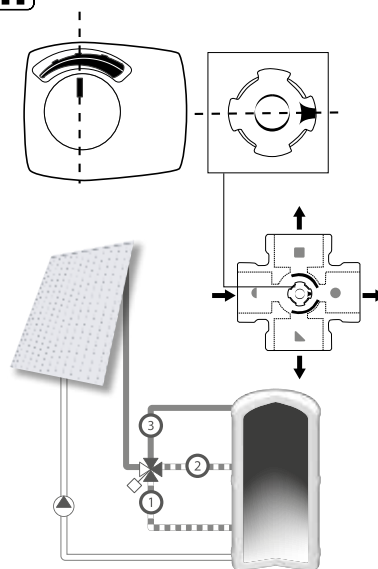
**f**



**g**



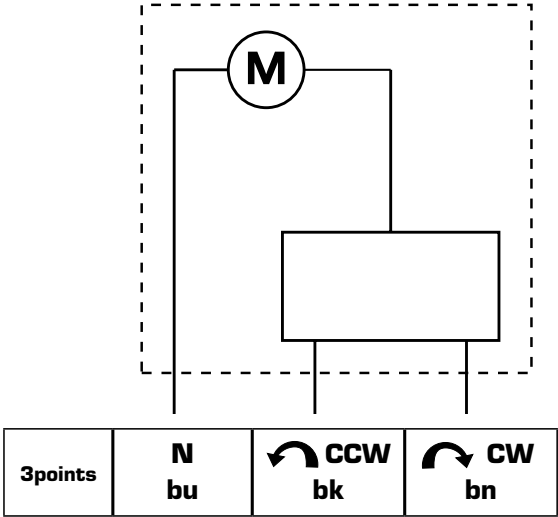
**h**



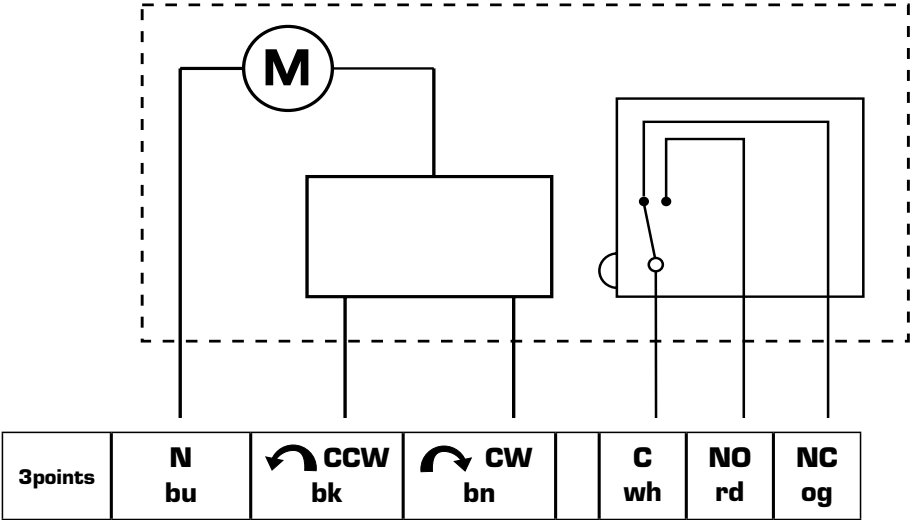
"We would like to pinpoint to the existence of a German patent DE 19821256C5 affecting the usage of bivalent 4-way valves in liquid circulation heating systems. In this patent the usage of a 4-way bivalent valve in a type of heating system is protected, in which 2 different heating circuits are operated in parallel, where the return of the first circuit is utilized as heat source for the parallel second heat circuit. A typical application would be a primary heat circuit with a heat source and a parallel floor heating, where the floor heating in a regulated manner is heated through its heat source and the return from the primary heat circuit is utilized as alternative secondary heat source for the floor heating. Such a utilization of our bivalent 4-way valve without approval of the patent holder is forbidden. All other applications our product group VRB are without restrictions possible."



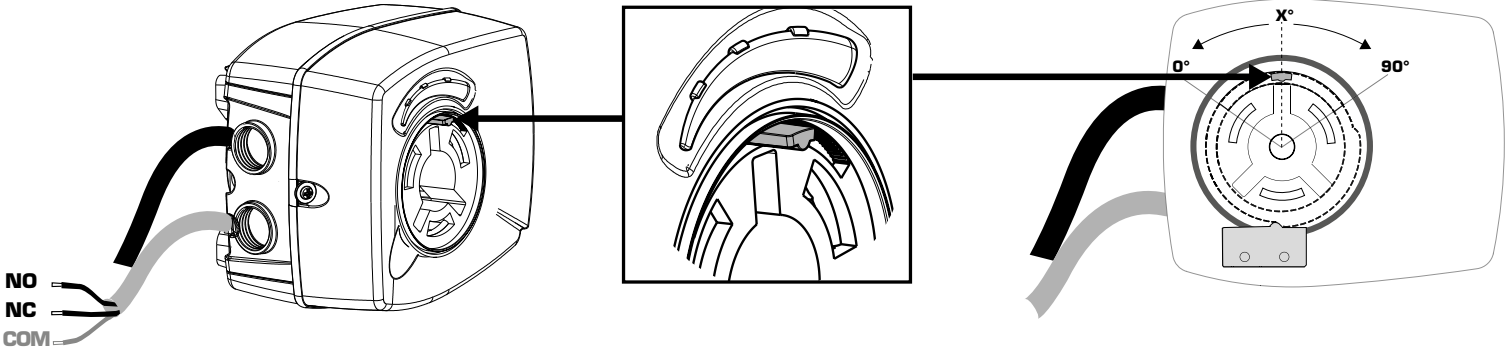
Series ARA6x1, ARA6x3



Series ARA6x2, ARA6x4



Series ARA6x2, 6x4



|    | 0° - (90° - x°) | (90° - x°) - 90° |
|----|-----------------|------------------|
| NO |                 |                  |
| NC |                 |                  |
|    | X° = 45°        |                  |



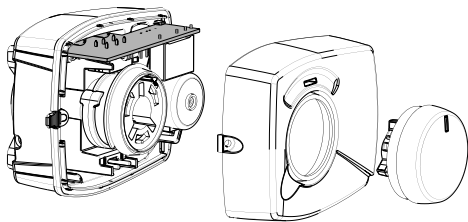
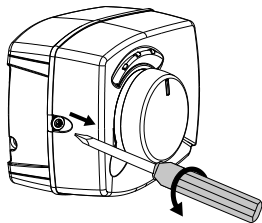
Series ARA69x



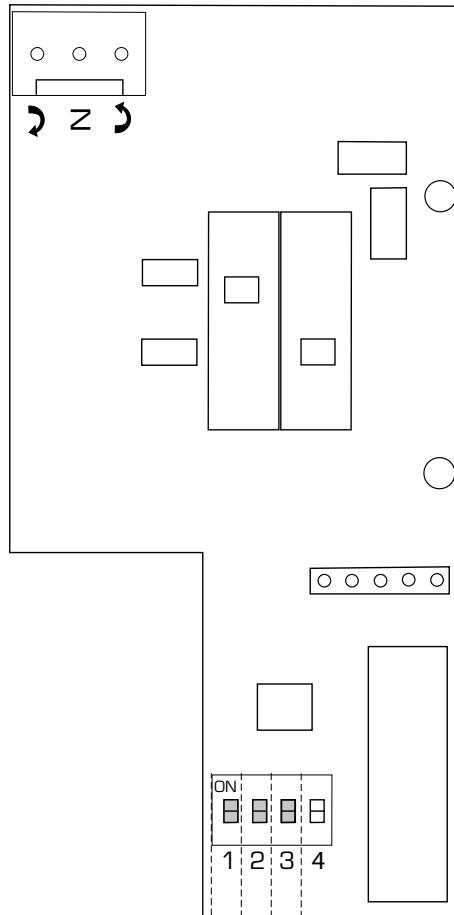
1



2



|    |   |   |   |  |
|----|---|---|---|--|
| ON |   |   |   |  |
| 1  | 2 | 3 | 4 |  |



|    |   |   |   |  |
|----|---|---|---|--|
| ON |   |   |   |  |
| 1  | 2 | 3 | 4 |  |

|    |      |
|----|------|
| 3  |      |
| -  | 0,5s |
| ON | 1s   |

|    |    |  |       |
|----|----|--|-------|
| 1  | 2  |  |       |
| -  | -  |  | 120s  |
| -  | ON |  | 240s  |
| ON | -  |  | 480s  |
| ON | ON |  | 1200s |



2

1

