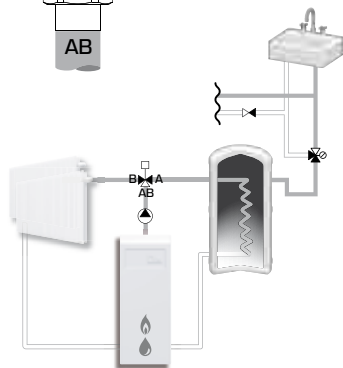
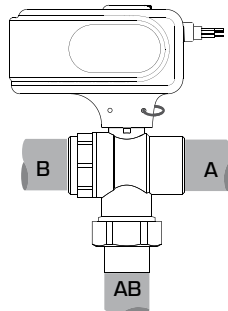




Serie MBA 13x



Piping Schematics are General Representations



Mtrl.nr. 98140881 • Ritn.nr 9252 utg B • Rev 1412 Printed in EU



SERIES MBA100



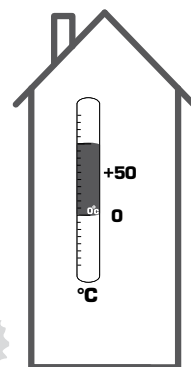
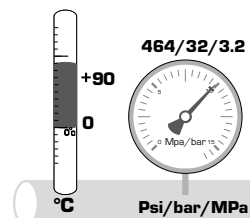
NO.1 IN HYDRONIC SYSTEM CONTROL



Series MBA 12x
Series MBA 13x



LVD 2006/95/EC
EMC 2004/108/EC
RoHS 2011/65/EC

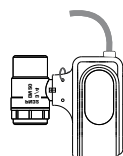
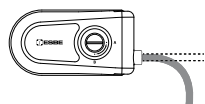
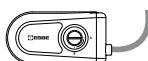
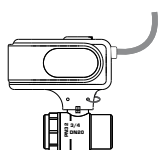
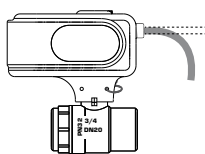


1

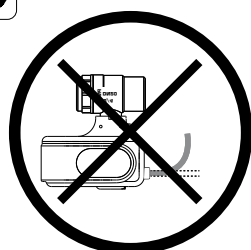
IP44 POSITION

RECOMMENDED

NOT GUARANTEED

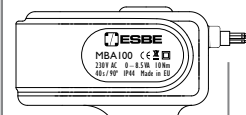
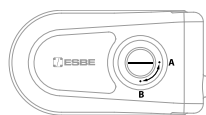


NOT ALLOWED



2A

Serie MBA 12x

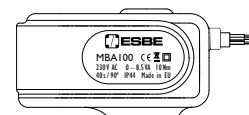
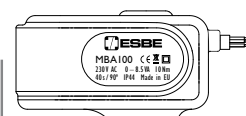
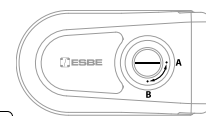


1 ↓

2 ↑

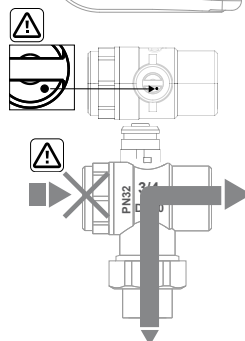
2B

Serie MBA 13x



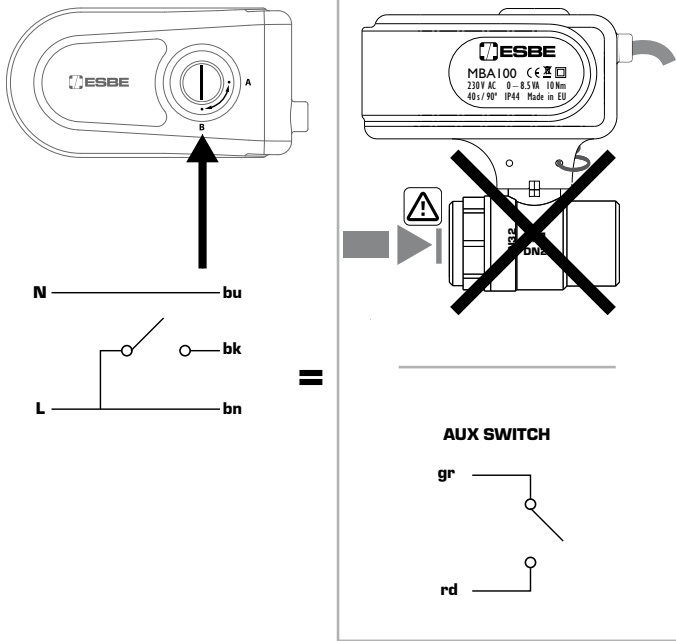
1 ↓

2 ↑

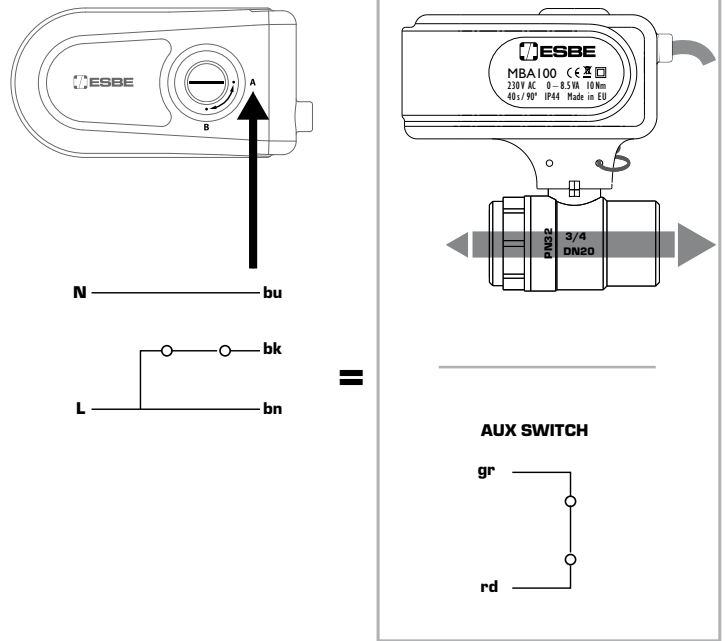


3A

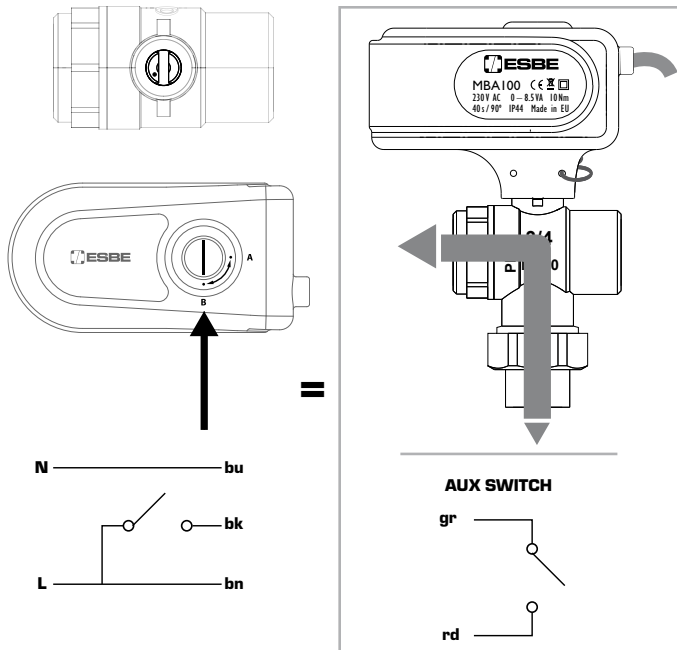
Serie MBA 12x

**3B**

Serie MBA 12x

**4A**

Serie MBA 13x

**4B**

Serie MBA 13x

