



SPARE PARTS EXPLODED VIEW  
GAS-WALL BOILER ATM. BURNER  
Model  
**CARES XC - HS XC**

R8218623-02 - 25/02/2021

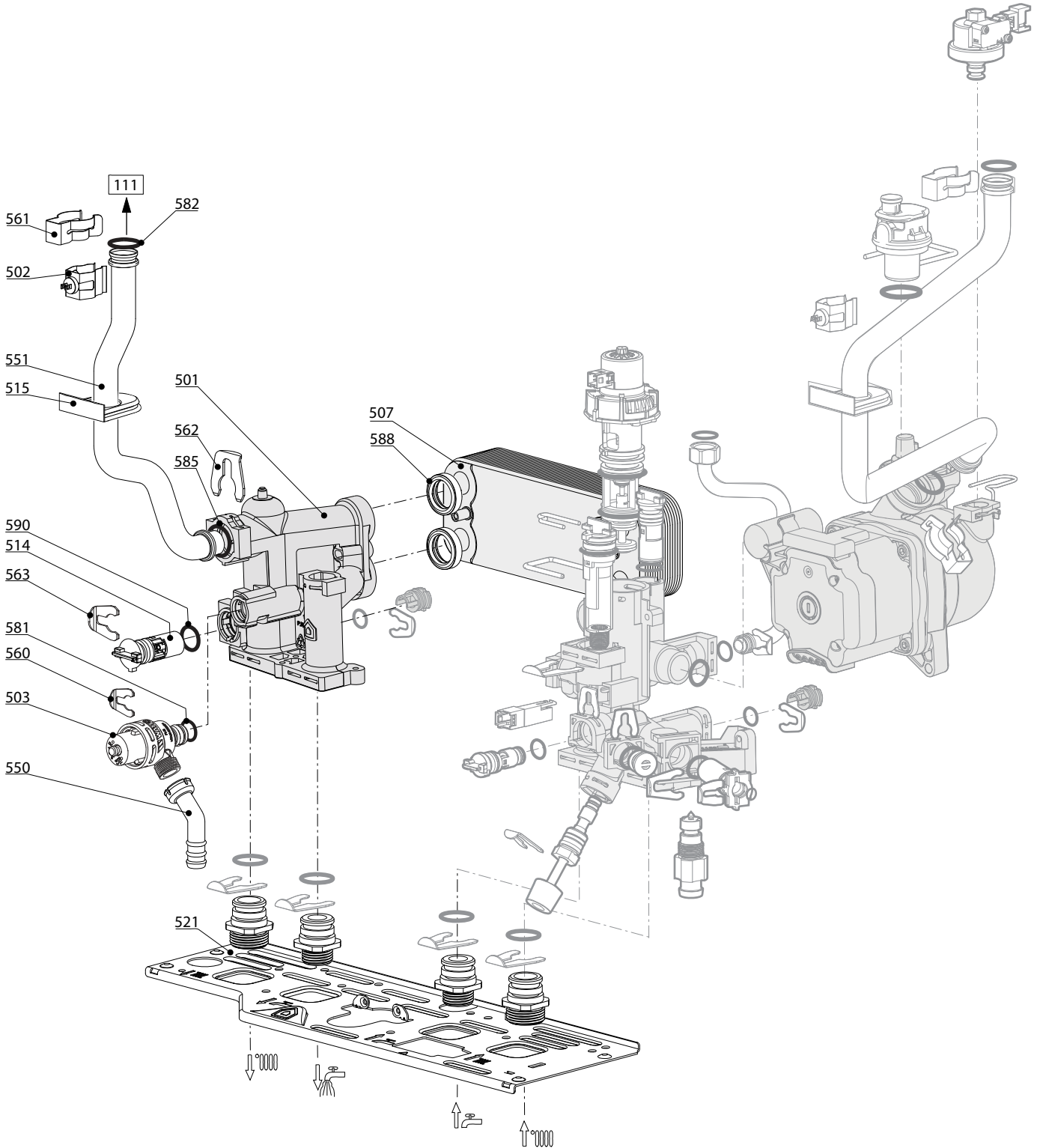
CARES XC - HS XC

Gas-wall boiler atm. burner

1	3301685	CARES XC 10 FF NG	02-2021	-
2	3301684	CARES XC 15 FF NG	02-2021	-
3	3301683	CARES XC 18 FF NG	02-2021	-
4	3301682	CARES XC 24 FF NG	02-2021	-
5	3301689	HS XC 10 FF NG	03-2021	-
6	3301688	HS XC 15 FF NG	03-2021	-
7	3301687	HS XC 18 FF NG	03-2021	-
8	3301686	HS XC 24 FF NG	03-2021	-
Col	Reference	Model type	Begin	End







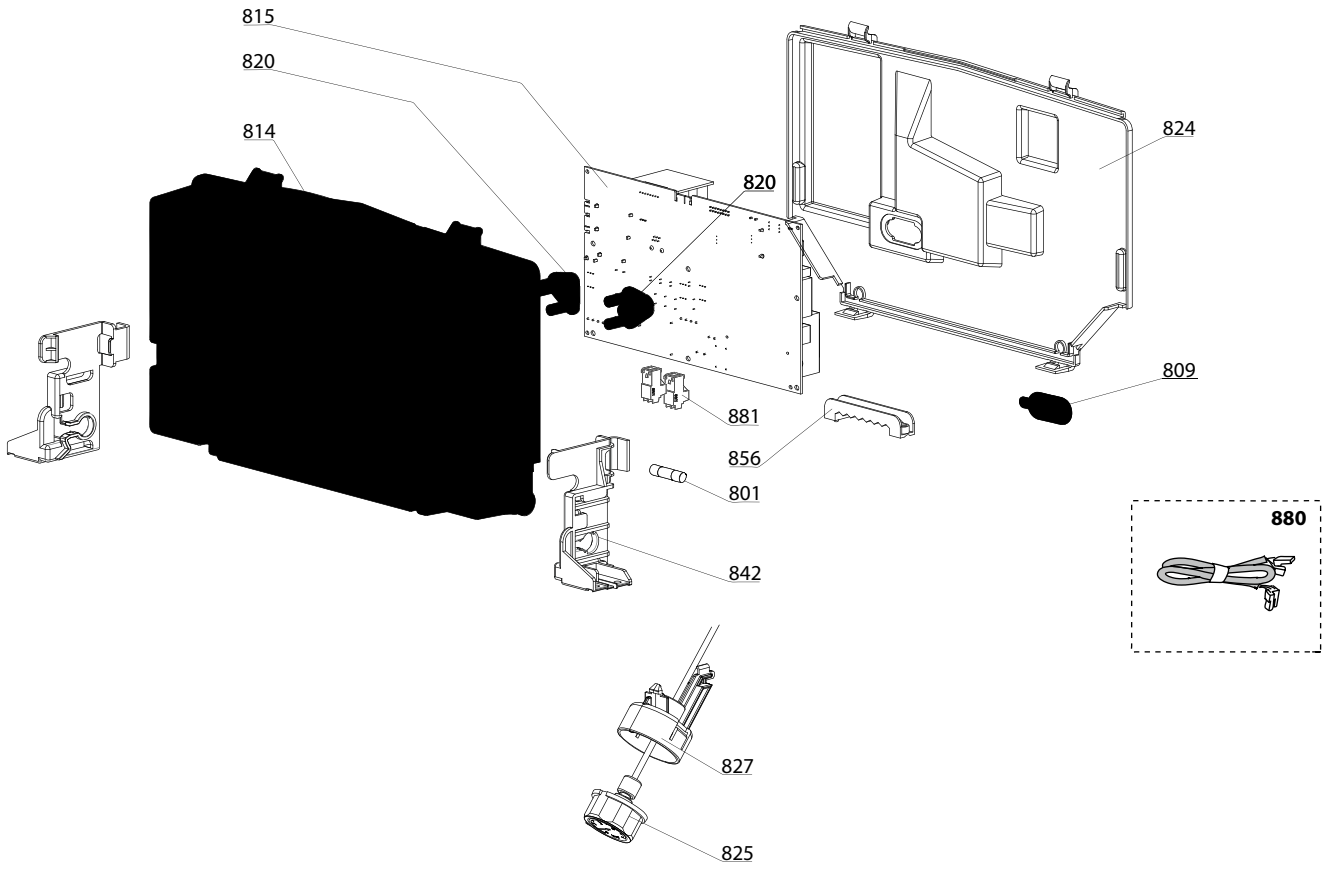




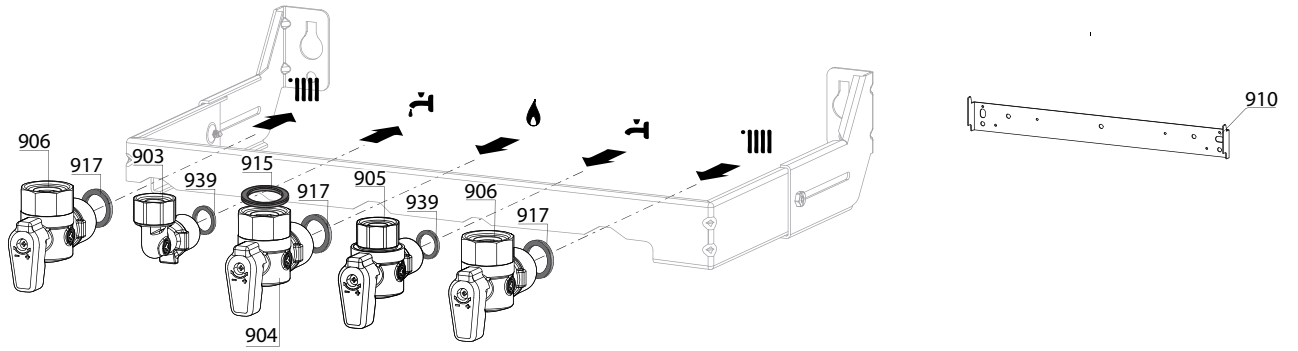
☉⇒	Description	Manf. Pt. N	Type	<div style="display: flex; justify-content: space-between; font-size: small;"> <span>CARES XC 10 FF NG</span> <span>CARES XC 15 FF NG</span> <span>CARES XC 18 FF NG</span> <span>CARES XC 24 FF NG</span> <span>HS XC 10 FF NG</span> <span>HS XC 15 FF NG</span> <span>HS XC 18 FF NG</span> <span>HS XC 24 FF NG</span> </div>																		From	to
				1	2	3	4	5	6	7	8	9	10	11	12	13	14	15	16	17	18		
<b>0600</b>	<b>RETURN GROUP</b>																						
0601	ГРУППА ВОЗВРАТА	65119770-01		●	●	●	●	●	●	●	●	●	●	●	●	●	●	●	●				
0602	РЕЛЕ ДАВЛЕНИЯ	65115792		●	●	●	●	●	●	●	●	●	●	●	●	●	●	●	●				
0603	ДАТЧИК ТЕМПЕРАТУРЫ + КЛИПСА	990686-01		●	●	●	●	●	●	●	●	●	●	●	●	●	●	●	●				
0604	НАСОС 5М	65153611		●	●	●	●	●	●	●	●	●	●	●	●	●	●	●	●				
0605	МОТОР 3-Х ХОДОВОГО КЛАПАНА	65114936		●	●	●	●	●	●	●	●	●	●	●	●	●	●	●	●				
0606	ДАТЧИК ПРОТОКА (ГЕРКОН)	65114921-01		●	●	●	●	●	●	●	●	●	●	●	●	●	●	●	●				
0607	ДАТЧИК ПРОТОКА (ПОПЛАВОК)	65114919		●	●	●	●	●	●	●	●	●	●	●	●	●	●	●	●				
0610	3-Х ХОДОВОЙ КЛАПАН + МОТОР (КИТ)	65114924		●	●	●	●	●	●	●	●	●	●	●	●	●	●	●	●				
0612	ЗАГЛУШКА	65114920		●	●	●	●	●	●	●	●	●	●	●	●	●	●	●	●				
0613	КЛИПСА D:10	65104260		●	●	●	●	●	●	●	●	●	●	●	●	●	●	●	●				
0614	АВТОМАТ. ВОЗДУХООТВОДЧИК WILO	65154043		●	●	●	●	●	●	●	●	●	●	●	●	●	●	●	●				
0615	КРАН ДЛЯ СЛИВА	65114922		●	●	●	●	●	●	●	●	●	●	●	●	●	●	●	●				
0616	ВОДЯНОЙ ФИЛЬТР	65114923		●	●	●	●	●	●	●	●	●	●	●	●	●	●	●	●				
0617	УПЛОТНЕНИЕ	60000807		●	●	●	●	●	●	●	●	●	●	●	●	●	●	●	●				
0620	КРАН ПОДПИТКИ	65119771		●	●	●	●	●	●	●	●	●	●	●	●	●	●	●	●				
0622	БАЙПАС	65114917		●	●	●	●	●	●	●	●	●	●	●	●	●	●	●	●				
0623	ОБРАТНЫЙ КЛАПАН	65114918-01		●	●	●	●	●	●	●	●	●	●	●	●	●	●	●	●				
0650	ТРУБКА РАСШИРИТЕЛЬНОГО БАКА	65115068		●	●	●	●	●	●	●	●	●	●	●	●	●	●	●	●				
0651	ТРУБКА ВОЗВРАТА ТЕПЛОНОСИТЕЛЯ (CU)	65115928		●	●	●	●	●	●	●	●	●	●	●	●	●	●	●	●				
0660	КЛИПСА D:10	65114933		●	●	●	●	●	●	●	●	●	●	●	●	●	●	●	●				
0662	КЛИПСА	61307589		●	●	●	●	●	●	●	●	●	●	●	●	●	●	●	●				
0663	U-CLIP	65154044		●	●	●	●	●	●	●	●	●	●	●	●	●	●	●	●				
0664	КЛИПСА	65104322		●	●	●	●	●	●	●	●	●	●	●	●	●	●	●	●				
0665	КЛИПСА D:12	65114932		●	●	●	●	●	●	●	●	●	●	●	●	●	●	●	●				
0666	КЛИПСА	60000309		●	●	●	●	●	●	●	●	●	●	●	●	●	●	●	●				
0667	КЛИПСА D:6	65100680		●	●	●	●	●	●	●	●	●	●	●	●	●	●	●	●				
0668	КЛИПСА	65114927		●	●	●	●	●	●	●	●	●	●	●	●	●	●	●	●				
0671	КЛИПСА	65114926		●	●	●	●	●	●	●	●	●	●	●	●	●	●	●	●				
0672	КЛИПСА D:19	65114931		●	●	●	●	●	●	●	●	●	●	●	●	●	●	●	●				
0680	ПРОКЛАДКА 3/8"	573521		●	●	●	●	●	●	●	●	●	●	●	●	●	●	●	●				
0681	O-КОЛЬЦО 9.9X2.62	65114937		●	●	●	●	●	●	●	●	●	●	●	●	●	●	●	●				
0682	O-КОЛЬЦО 17.04X3.53	65104262		●	●	●	●	●	●	●	●	●	●	●	●	●	●	●	●				
0683	O-КОЛЬЦО 23.47X2.62	65114939		●	●	●	●	●	●	●	●	●	●	●	●	●	●	●	●				
0684	O-КОЛЬЦО	65154045		●	●	●	●	●	●	●	●	●	●	●	●	●	●	●	●				
0687	O-КОЛЬЦО 5.7X1.9	61009834-10		●	●	●	●	●	●	●	●	●	●	●	●	●	●	●	●				
0688	O-КОЛЬЦО 21.89X2.62	65104320		●	●	●	●	●	●	●	●	●	●	●	●	●	●	●	●				
0690	O-КОЛЬЦО 8.9X2.7	61009834-14		●	●	●	●	●	●	●	●	●	●	●	●	●	●	●	●				
0691	O-КОЛЬЦО 17.86X2.62	61308091		●	●	●	●	●	●	●	●	●	●	●	●	●	●	●	●				
0692	O-КОЛЬЦО 11.91X2.62	65114940		●	●	●	●	●	●	●	●	●	●	●	●	●	●	●	●				
0693	O-КОЛЬЦО 15.88X2.62	65114941		●	●	●	●	●	●	●	●	●	●	●	●	●	●	●	●				
0694	O-КОЛЬЦО 17.13X2.62	65114938		●	●	●	●	●	●	●	●	●	●	●	●	●	●	●	●				

Note 1: For appliances with main exchanger in copper. - Note 2: For appliances with main exchanger in aluminium.

800



900



5000

5001  
 Transf. gaz  
 Conv. gas  
 Trsf. gas  
 Transf. gas  
 > **G31**  
 (LPG - GPL)

5002  
 Transf. gaz  
 Conv. gas  
 Trsf. gas  
 Transf. gas  
 > **G20**  
 (NAT - MET)





## LIST OF THE ABBREVIATIONS

HW .....	: Hot water.
CW .....	: Cold water.
C .....	: Ceramic resistance (normal heating).
Ca .....	: Ceramic resistance (accelerated heating)
TP .....	: Immersion heater.
1F .....	: With fittings.
2F .....	: Without fittings.
3F .....	: With fittings and another outlet connection.
AMI .....	: With mixing valve.
SMI .....	: Without mixing valve.
PUISS .....	: Power of th appliance.
PN .....	: Appliance with normal pression.
LP .....	: Appliance with low pression.
PV .....	: Appliance with variable power.
PF .....	: Appliance with fixed power.

## IDENTIFICATION PLATE

### SERIAL NUMBER

<b>10 Characters :</b>	04 05 125 011	Sequential number Manufacturing day Year of manufacture
<b>11 Characters :</b>	1 95 065004 - 31	Technical number of the appliance Sequential number Year of manufacture
Month of manufacture : from 1 to 9 → Jan. to Sep., O → Oct., N → Nov., D → Dec.		
<b>19 Characters :</b>	08 05 0013199 900640031	Product reference Sequential number
Year of manufacture Month of manufacture		
<b>20 Characters :</b>	3675007 XX 2 07 070 00315	Sequential number Manufacturing day Year of manufacture
Product reference Millenium of manufacture		
<b>21 Characters :</b>	3675007 XX 07 070 0000315	Sequential number Manufacturing day
Product reference Year of manufacture		