

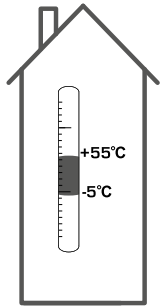
# ESBE SERIES CUA110



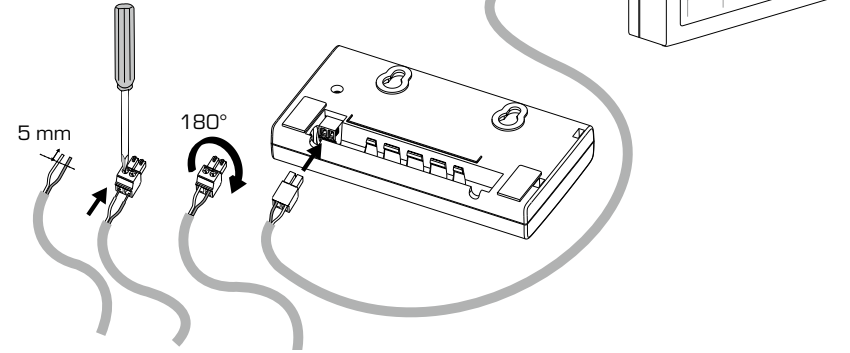
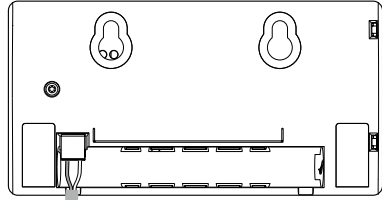
Series CUA110

CE

LVD 2006/95/EC  
EMC 2004/108/EC  
RoHS 2002/95/EEC



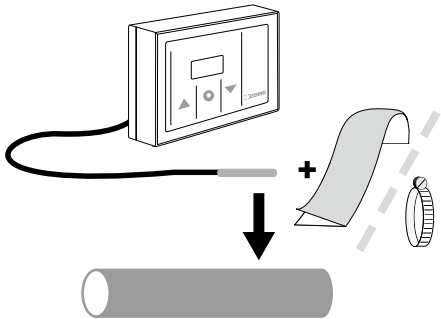
**1**



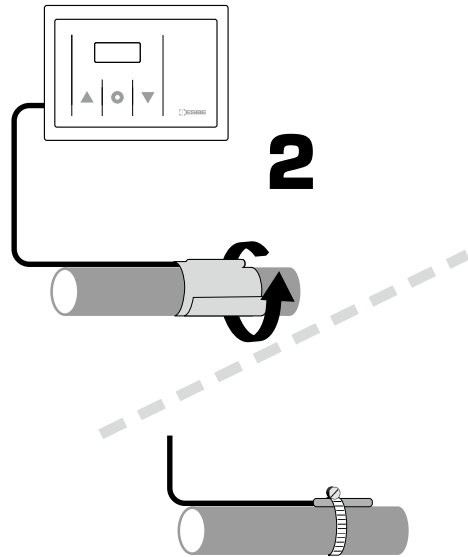
**2**



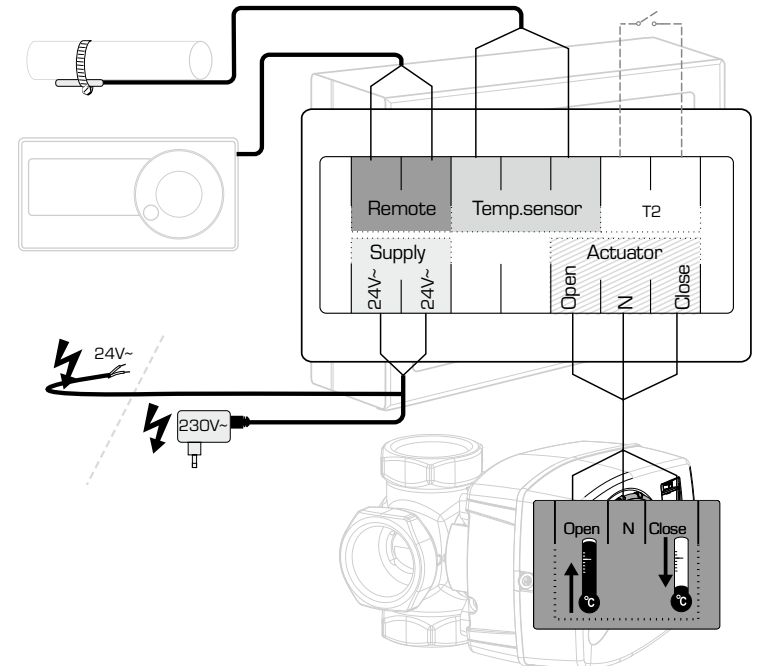
**1**



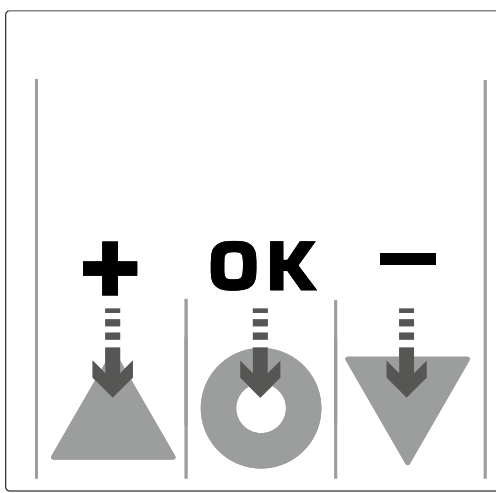
**2**



**3**



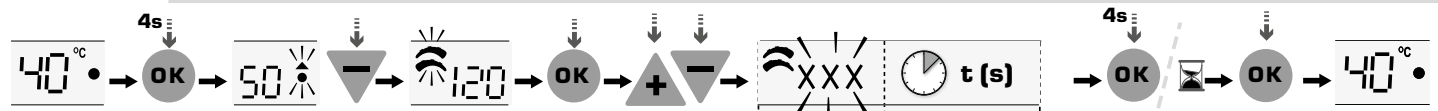
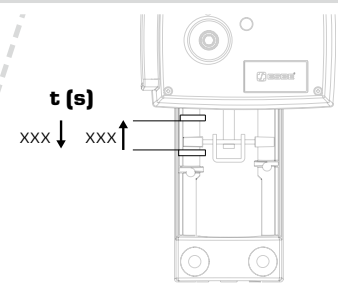
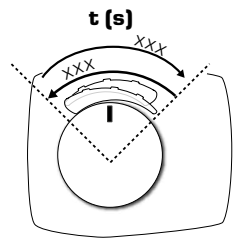
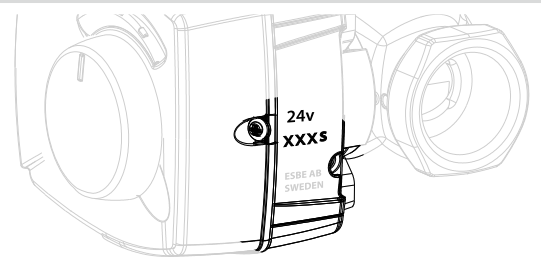
4



www.esbe.se

Mtrl.nr. 9814 03 93 • Ritn.nr. 9213 utg. B • Rev. 1012

5



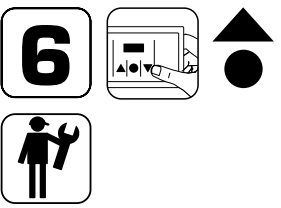
XXX	t (s)
015	< 25
030	26 - 45
060	46 - 90
120	91 - 180
240	181 - 360
480	> 360



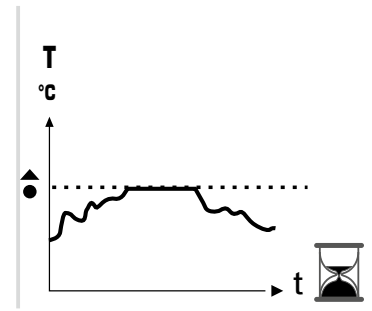
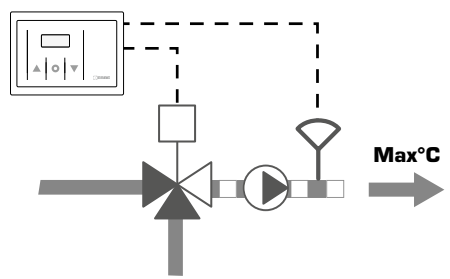
SERIES CUA110



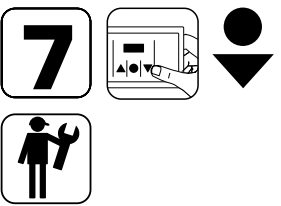
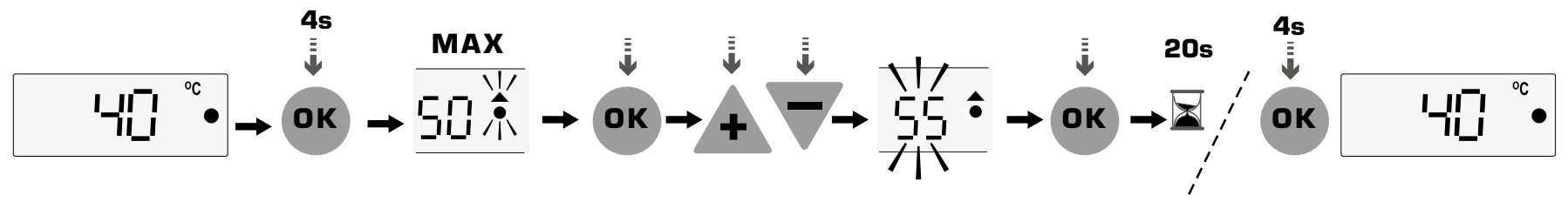
NO.1 IN HYDRONIC SYSTEM CONTROL



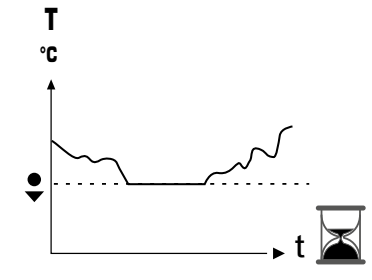
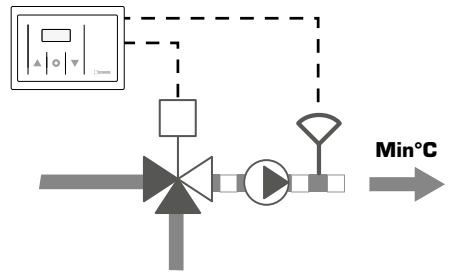
▲ = MAX °C



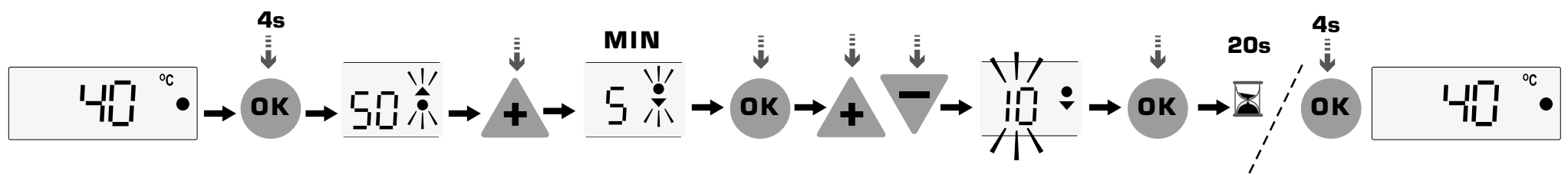
	50 °C
	~40 - 50 °C
	~60 - 80 °C



▼ = MIN °C



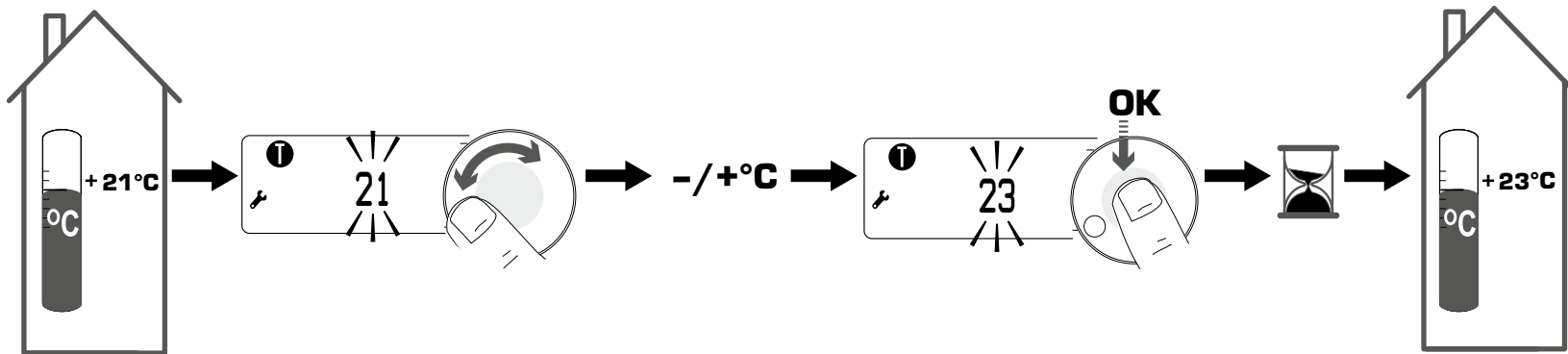
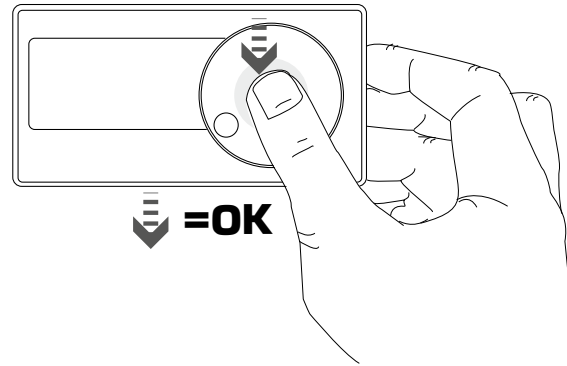
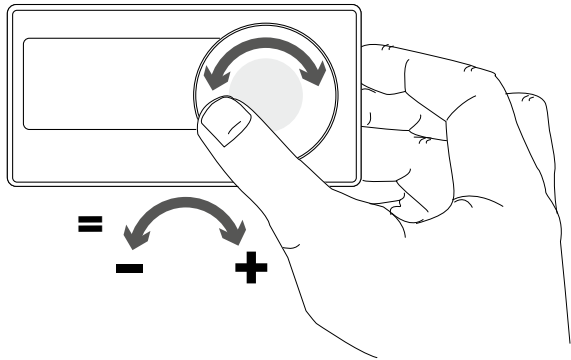
	5 °C
	~5 - 25 °C
	~5 - 25 °C

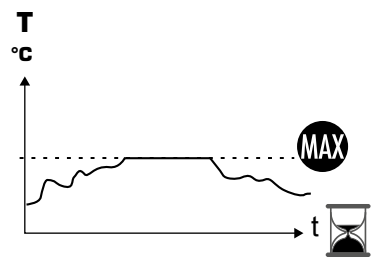
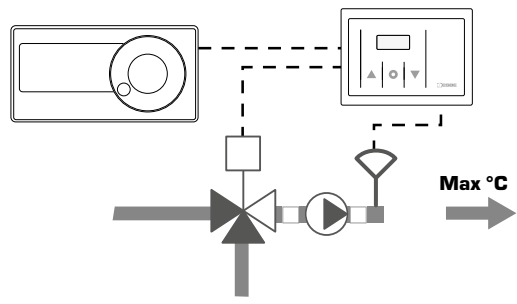
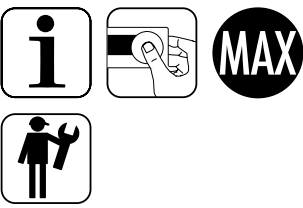


8

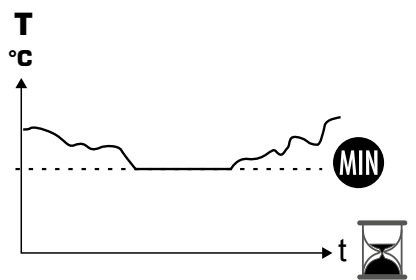
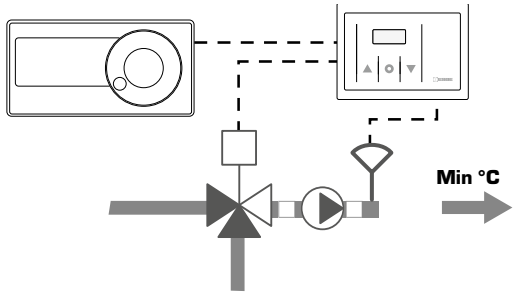
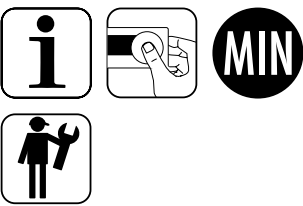
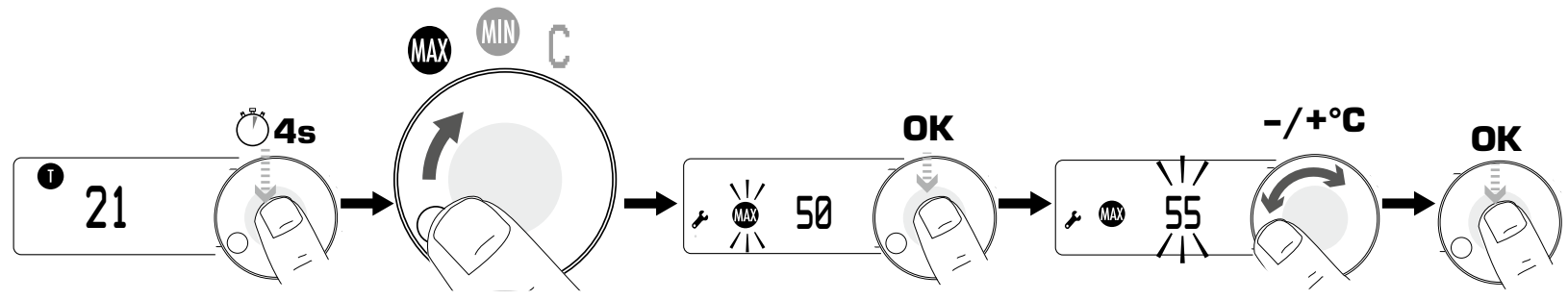


i

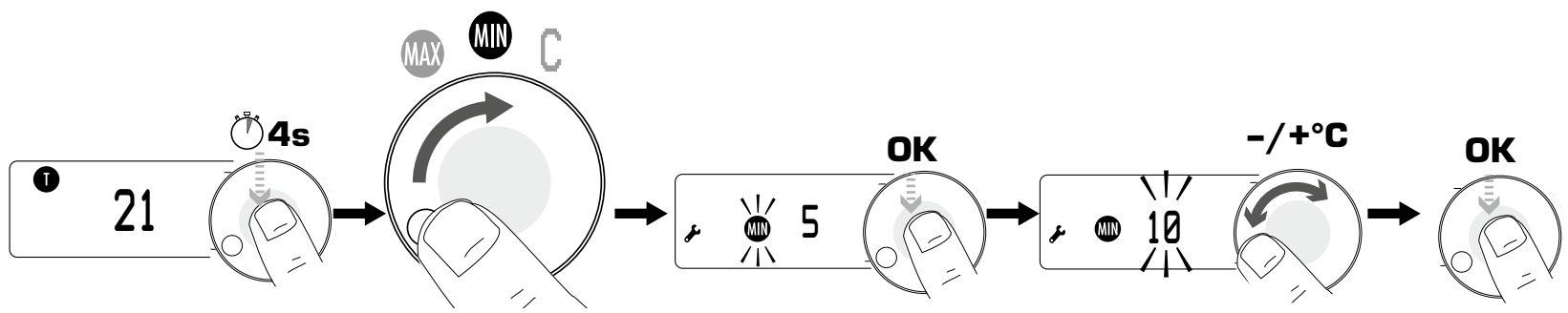


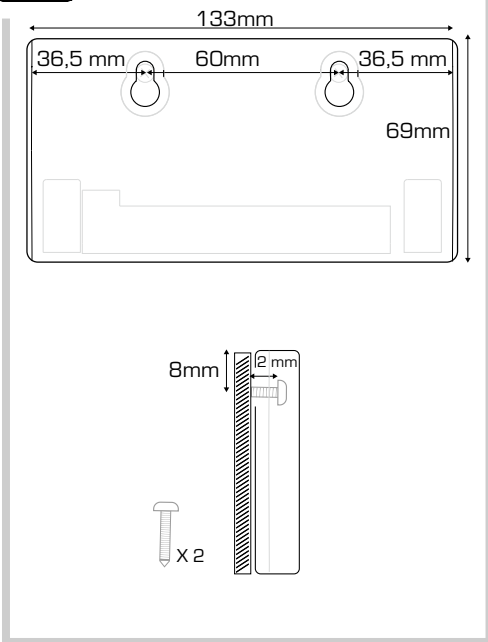
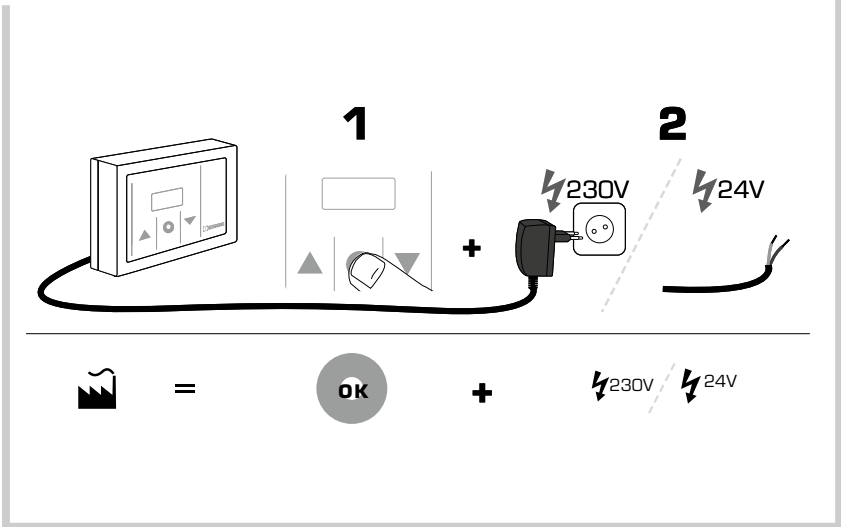
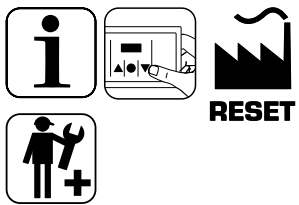


	50 °C
	~40 - 50 °C
	~60 - 80 °C
	60 °C



	5 °C
	~5 - 25 °C
	~5 - 25 °C
	~5 - 25 °C

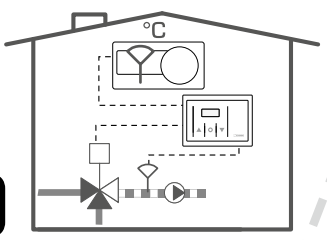




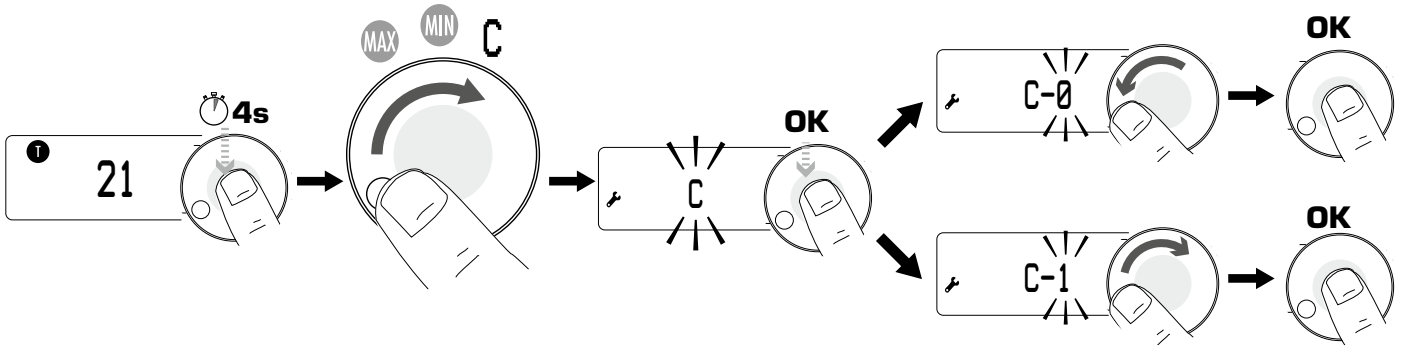
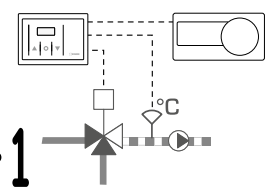


**i**

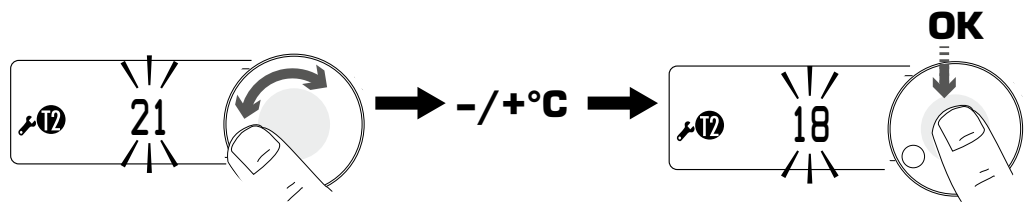
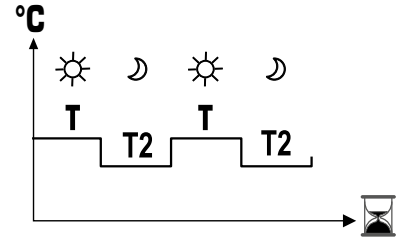
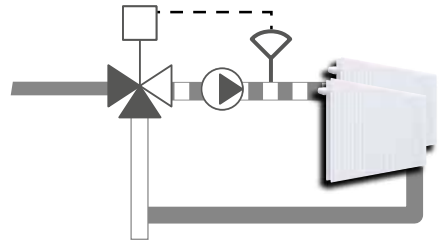
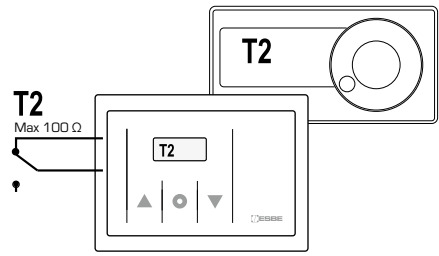
**C-0**



**C-1**



**i** **T2**



**T**

