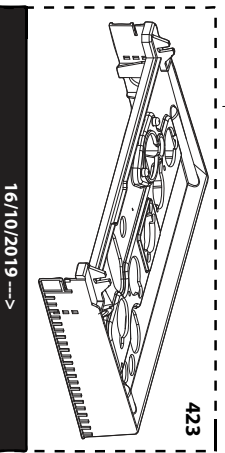
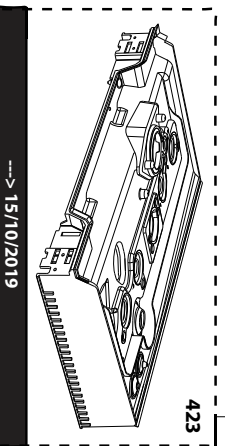
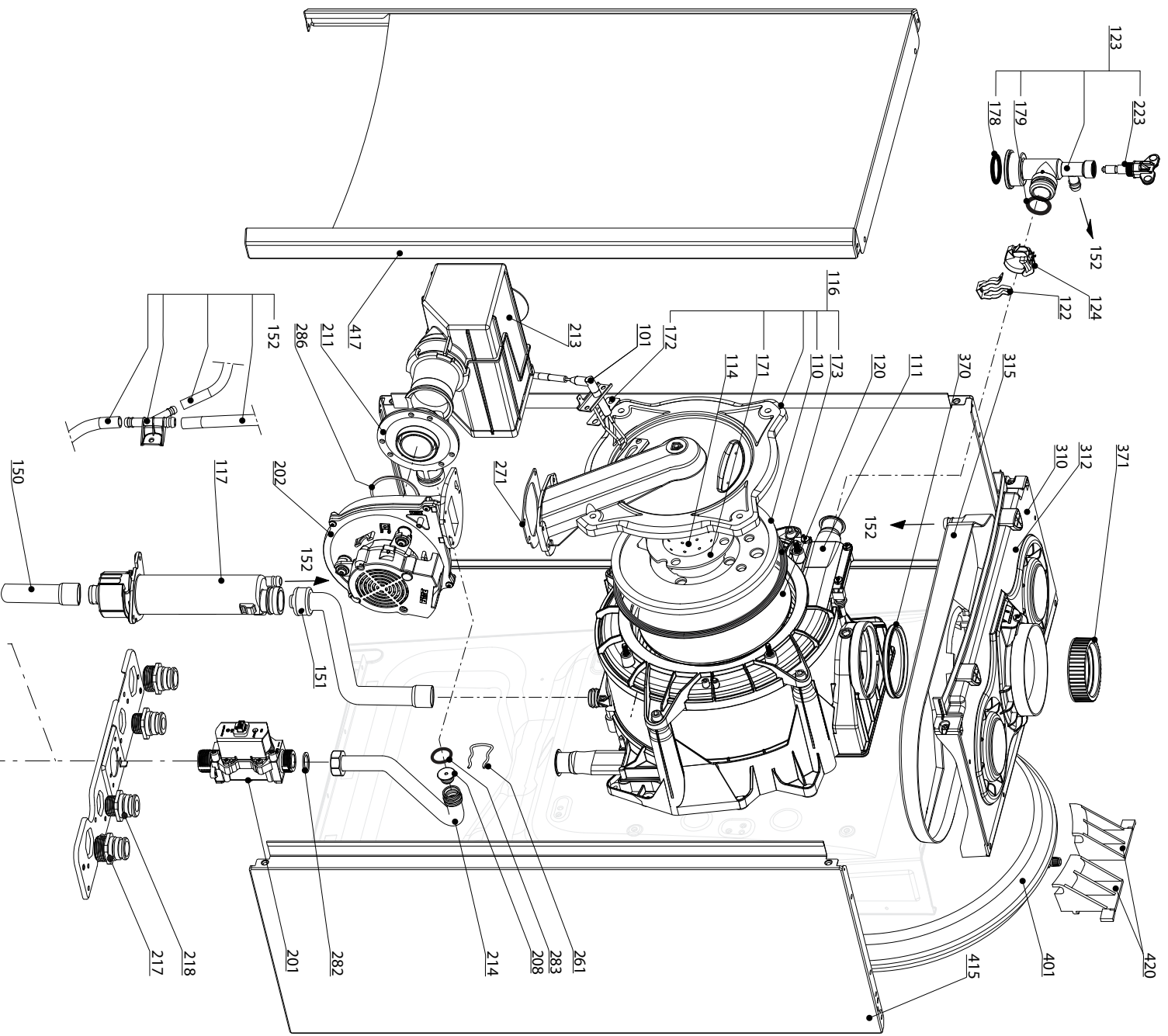


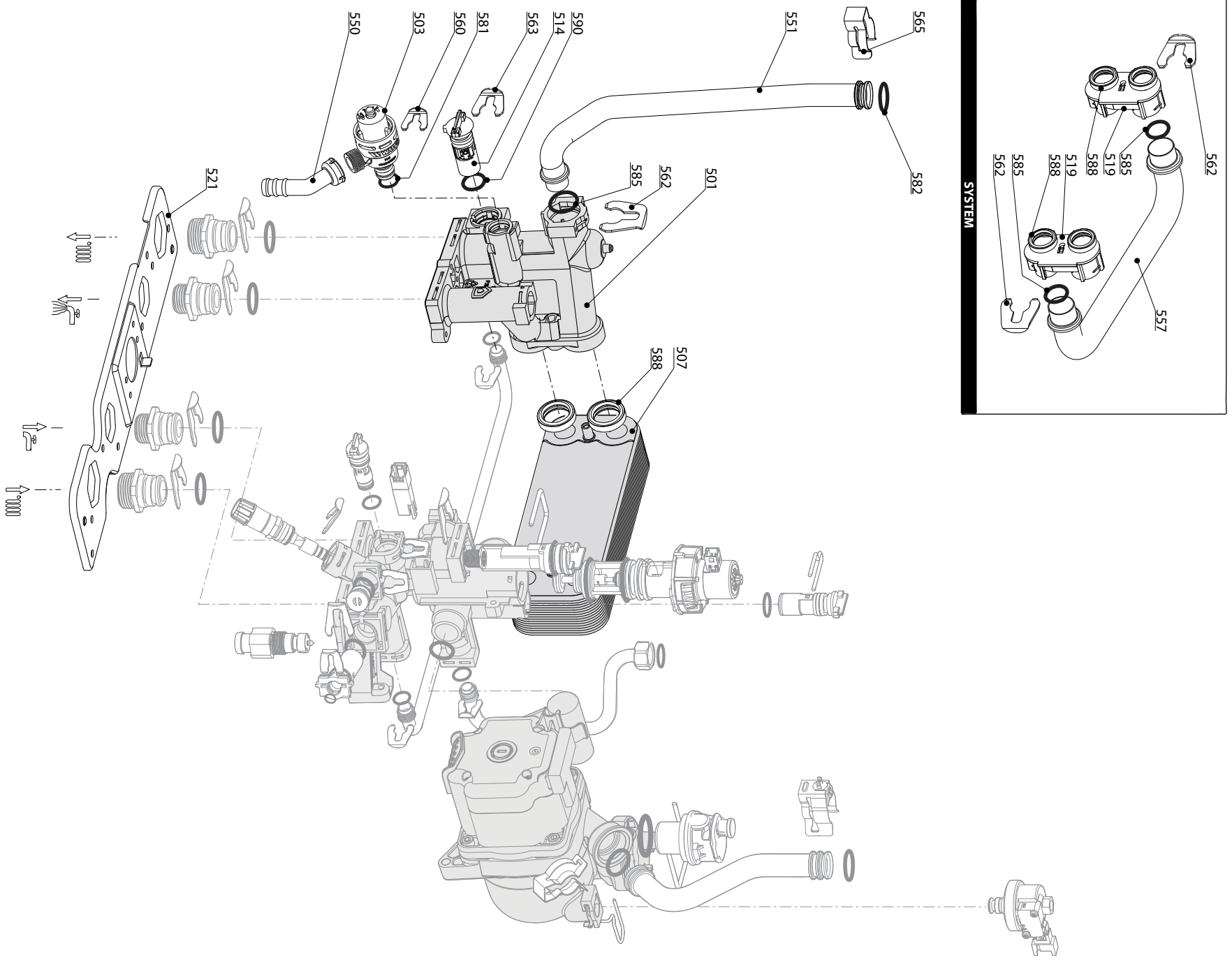
SPARE PARTS EXPLODED VIEW  
 GAS-WALL CONDENSING BOILERS  
 Model  
**ALTEAS ONE - GENUS ONE**

R8203485-10 - 06/07/2020

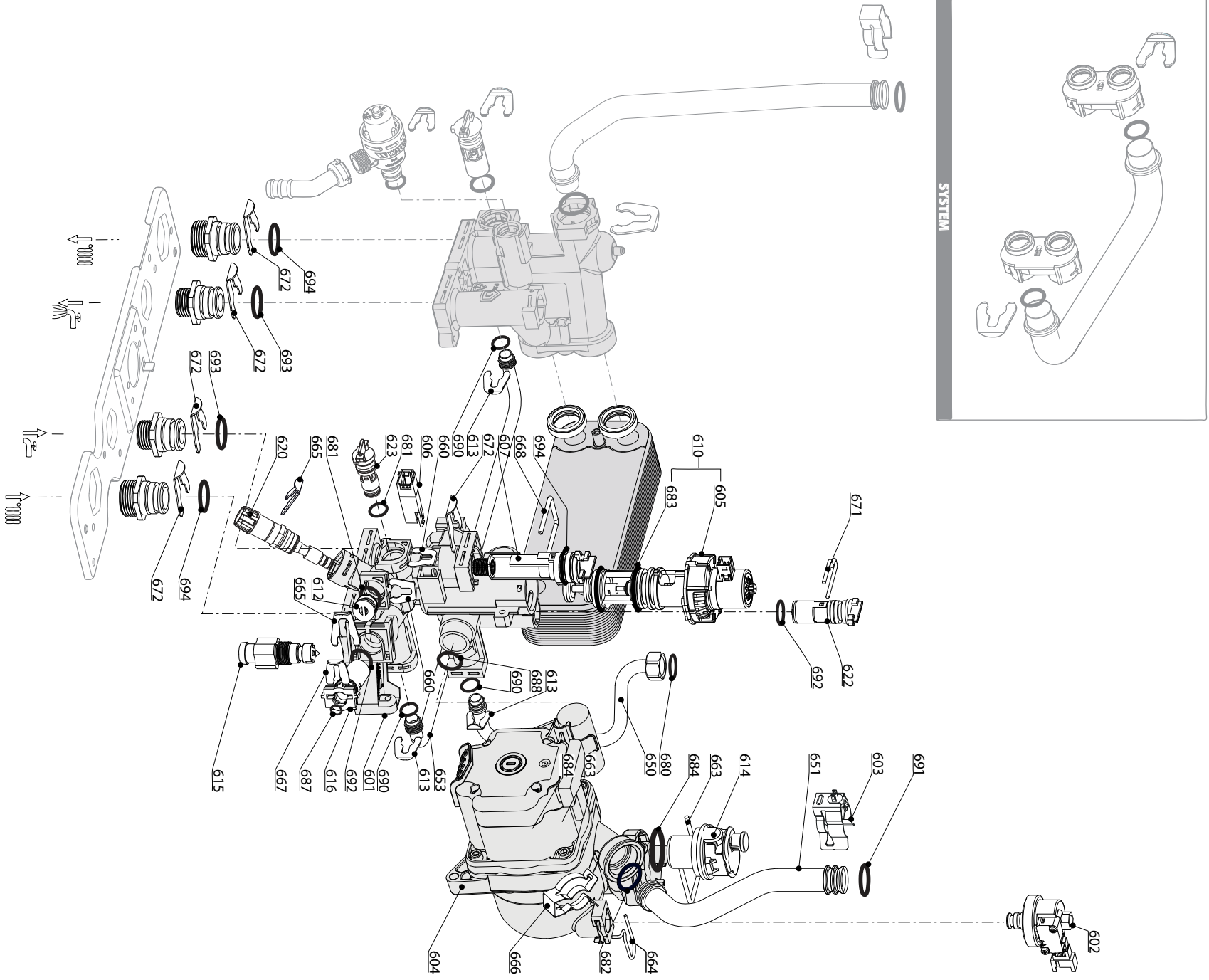
1	3301058	ALTEAS ONE NET 24	07-2017	-
2	3301059	ALTEAS ONE NET 30	07-2017	-
3	3301060	ALTEAS ONE NET 35	07-2017	-
4	3301018	GENUS ONE 24	07-2017	-
4	3301113	GENUS ONE NET 24	07-2017	-
5	3301019	GENUS ONE 30	07-2017	-
5	3301114	GENUS ONE NET 30	07-2017	-
6	3301020	GENUS ONE 35	07-2017	-
6	3301115	GENUS ONE NET 35	07-2017	-
7	3301025	GENUS ONE SYSTEM 12	07-2017	-
8	3301026	GENUS ONE SYSTEM 18	07-2017	-
9	3301027	GENUS ONE SYSTEM 24	07-2017	-
10	3301028	GENUS ONE SYSTEM 30	07-2017	-
11	3301029	GENUS ONE SYSTEM 35	07-2017	-
Col	Reference	Model type	Begin	End





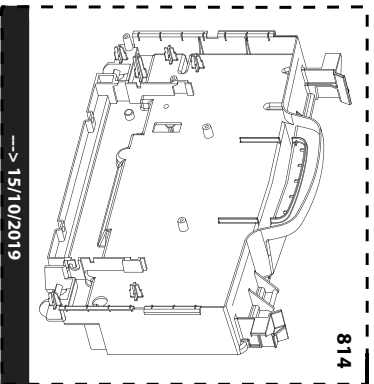


☉⇒	Description	Manf. Pt. N	Type	<div style="display: flex; justify-content: space-between; font-size: small;"> <span>ALTEA ONE 24</span> <span>ALTEA ONE 30</span> <span>GENUS ONE 35</span> <span>GENUS ONE (NET) 24</span> <span>GENUS ONE (NET) 30</span> <span>GENUS ONE (NET) 35</span> <span>GENUS ONE (ST) 12</span> <span>GENUS ONE (ST) 18</span> <span>GENUS ONE (ST) 24</span> <span>GENUS ONE (ST) 30</span> </div>																		From	to
				1	2	3	4	5	6	7	8	9	10	11	12	13	14	15	16	17	18		
<b>0500</b>	<b>FLOW GROUP</b>																						
0501	ГРУППА ПОДАЧИ	65115933		●	●	●	●	●	●												06/18		
	ГРУППА ПОДАЧИ	65115933								●	●	●	●	●									
	ГРУППА ПОДАЧИ	65117952		●	●	●	●	●	●											07/18			
0503	ПРЕДОХРАНИТЕЛЬНЫЙ КЛАПАН (3 БАРА)	61312668		●	●	●	●	●	●	●	●	●	●	●									
0507	ТЕПЛООБМЕННИК ГВС (16 ПЛАСТИН)	65116537		●	●	●	●	●	●														
0514	БАЙПАС	65114917		●	●	●	●	●	●														
0519	ПЕРЕХОДНИК 'SYSTEM +' OPEN	60001365								●	●	●	●	●									
0521	ОСНОВАНИЕ ГИДРАВЛИЧЕСКОЙ ГРУППЫ	65116538		●	●	●	●	●	●	●	●	●	●	●	●	●	●	●	●		05/19		
	ОСНОВАНИЕ ГИДРАВЛИЧЕСКОЙ ГРУППЫ	65119440		●	●	●	●	●	●	●	●	●	●	●	●	●	●	●	●	06/19			
0550	ПАТРУБОК ПРЕДОХРАНИТЕЛЬНОГО КЛАПАНА	60001955		●	●	●	●	●	●	●	●	●	●	●	●	●	●	●	●				
0551	ТРУБКА ПОДАЧИ ТЕПЛОНОСИТЕЛЯ 24KW	65116539		●				●			●	●	●	●	●	●	●	●	●				
	ТРУБКА ПОДАЧИ ТЕПЛОНОСИТЕЛЯ	65116569			●			●							●								
	ТРУБКА ПОДАЧИ ТЕПЛОНОСИТЕЛЯ	65116578				●			●									●					
0557	ТРУБКА (D.H.W.RETURN)	65115935								●	●	●	●	●	●	●	●	●	●				
0560	КЛИПСА D:10	65114933		●	●	●	●	●	●	●	●	●	●	●	●	●	●	●	●				
0562	КЛИПСА D:18	65104259		●	●	●	●	●	●	●	●	●	●	●	●	●	●	●	●				
0563	КЛИПСА D:12	65114932		●	●	●	●	●	●	●	●	●	●	●	●	●	●	●	●				
0565	КЛИПСА	60000309		●	●	●	●	●	●	●	●	●	●	●	●	●	●	●	●				
0581	O-КОЛЬЦО 17.96X2.62	65104337		●	●	●	●	●	●	●	●	●	●	●	●	●	●	●	●				
0582	O-КОЛЬЦО 17.86X2.62	61308091		●	●	●	●	●	●	●	●	●	●	●	●	●	●	●	●				
0585	O-КОЛЬЦО 17.04X3.53	65104262		●	●	●	●	●	●	●	●	●	●	●	●	●	●	●	●				
0588	ПРОКЛАДКА ТЕПЛООБМЕННИКА	65114928		●	●	●	●	●	●	●	●	●	●	●	●	●	●	●	●				
0590	O-КОЛЬЦО 11.91X2.62	65114940		●	●	●	●	●	●	●	●	●	●	●	●	●	●	●	●				



Description	Manf. Pt. N	Type	<div style="display: flex; justify-content: space-between; font-size: small;"> <span>ALTEA ONE 24</span> <span>ALTEA ONE 30</span> <span>ALTEA ONE 35</span> <span>GENUS ONE</span> <span>GENUS ONE (NET) 24</span> <span>GENUS ONE (NET) 30</span> <span>GENUS ONE (NET) 35</span> <span>GENUS ONE S1/S1.12</span> <span>GENUS ONE S1/S1.18</span> <span>GENUS ONE S1/S1.24</span> <span>GENUS ONE S1/S1.30</span> </div>																		31	
			1	2	3	4	5	6	7	8	9	10	11	12	13	14	15	16	17	18	From	to
<b>0600 RETURN GROUP</b>																						
0601 ГРУППА ВОЗВРАТА	65116540		●	●	●	●	●	●														06/18
ГРУППА ВОЗВРАТА	65119770-01		●	●	●	●	●	●														07/18
ГРУППА ВОЗВРАТА	65119772-01								●	●	●	●	●									
0602 ДАТЧИК ДАВЛЕНИЯ	65115793		●	●	●	●	●	●	●	●	●	●	●	●								
0603 ДАТЧИК ТЕМПЕРАТУРЫ + КЛИПСА	990686-01		●	●	●	●	●	●	●	●	●	●	●	●								
0604 НАСОС 5М РWM ТАСО	65116908-01	TACO	●	●	●	●	●	●	●	●	●	●	●	●								
0605 МОТОР 3-Х ХОДОВОГО КЛАПАНА	65114936		●	●	●	●	●	●	●	●	●	●	●	●								
0606 ДАТЧИК ПРОТОКА (ГЕРКОН)	65114921-01		●	●	●	●	●	●														
0607 ДАТЧИК ПРОТОКА (ПОПЛАВОК)	65114919		●	●	●	●	●	●														
0610 3-Х ХОДОВОЙ КЛАПАН + МОТОР (KIT)	65114924		●	●	●	●	●	●	●	●	●	●	●	●								
0612 ЗАГЛУШКА	65114920		●	●	●	●	●	●	●	●	●	●	●	●								
0613 КЛИПСА D:10	65104260		●	●	●	●	●	●	●	●	●	●	●	●								
0614 АВТОМАТ. ВОЗДУХООТВОДЧИК PANASONIC	65116392	PANA.	●	●	●	●	●	●	●	●	●	●	●	●								
АВТОМАТ. ВОЗДУХООТВОДЧИК ТАСО ENER+	65112086	TACO	●	●	●	●	●	●	●	●	●	●	●	●								
0615 КРАН ДЛЯ СЛИВА	65114922		●	●	●	●	●	●	●	●	●	●	●	●								
0616 ВОДЯНОЙ ФИЛЬТР	65114923		●	●	●	●	●	●	●	●	●	●	●	●								
0620 КРАН ПОДПИТКИ	65116541		●	●	●	●	●	●	●	●	●	●	●	●								
0622 БАЙПАС	65114917		●	●	●	●	●	●	●	●	●	●	●	●								
0623 ОБРАТНЫЙ КЛАПАН	65114918		●	●	●	●	●	●	●	●	●	●	●	●								
0650 ТРУБКА РАСШИРИТЕЛЬНОГО БАКА	65116542		●	●	●	●	●	●	●	●	●	●	●	●								
0651 ТРУБКА ВОЗВРАТА ТЕПЛОНОСИТЕЛЯ	65116543		●	●	●	●	●	●	●	●	●	●	●	●								
0653 ПАТРУБОК БАЙПАСА	65116210		●	●	●	●	●	●														06/18
ПАТРУБОК БАЙПАСА	65116210								●	●	●	●	●									
0660 КЛИПСА D:10	65114933		●	●	●	●	●	●	●	●	●	●	●	●								
0663 U-КЛИПСА	65104704		●	●	●	●	●	●	●	●	●	●	●	●								
0664 КЛИПСА	65104322		●	●	●	●	●	●	●	●	●	●	●	●								
0665 КЛИПСА D:12	65114932		●	●	●	●	●	●	●	●	●	●	●	●								
0666 КЛИПСА	60000309		●	●	●	●	●	●	●	●	●	●	●	●								
0667 КЛИПСА D:6	65100680		●	●	●	●	●	●	●	●	●	●	●	●								
0668 КЛИПСА	65114927		●	●	●	●	●	●	●	●	●	●	●	●								
0671 КЛИПСА	65114926		●	●	●	●	●	●	●	●	●	●	●	●								
0672 КЛИПСА	65114931		●	●	●	●	●	●	●	●	●	●	●	●								
0680 ПРОКЛАДКА 3/8"	573521		●	●	●	●	●	●	●	●	●	●	●	●								
0681 O-КОЛЬЦО 9.9X2.62	65114937		●	●	●	●	●	●	●	●	●	●	●	●								
0682 O-КОЛЬЦО 17.04X3.53	65104262		●	●	●	●	●	●	●	●	●	●	●	●								
0683 O-КОЛЬЦО 23.47X2.62	65114939		●	●	●	●	●	●	●	●	●	●	●	●								
0684 O-КОЛЬЦО 3X35 EPDM 75 SH	65104705		●	●	●	●	●	●	●	●	●	●	●	●								
0687 O-КОЛЬЦО 5.7X1.9	61009834-10		●	●	●	●	●	●	●	●	●	●	●	●								
0688 O-КОЛЬЦО 21.89X2.62	65104320		●	●	●	●	●	●	●	●	●	●	●	●								
0690 O-КОЛЬЦО 8.9X2.7	61009834-14		●	●	●	●	●	●	●	●	●	●	●	●								
0691 O-КОЛЬЦО 17.86X2.62	61308091		●	●	●	●	●	●	●	●	●	●	●	●								
0692 O-КОЛЬЦО 11.91X2.62	65114940		●	●	●	●	●	●	●	●	●	●	●	●								
0693 O-КОЛЬЦО 15.88X2.62	65114941		●	●	●	●	●	●	●	●	●	●	●	●								
0694 O-КОЛЬЦО 17.13X2.62	65114938		●	●	●	●	●	●	●	●	●	●	●	●								

800

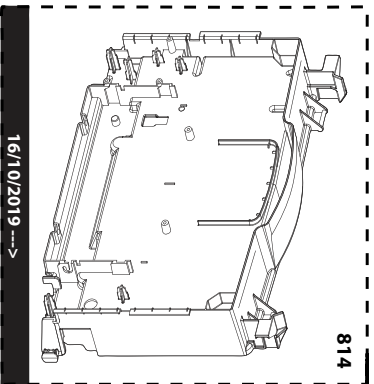


814

---> 15/10/2019

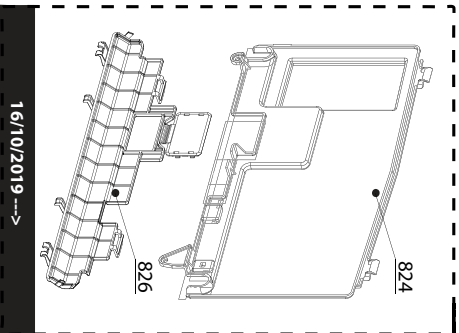
824

---> 15/10/2019



814

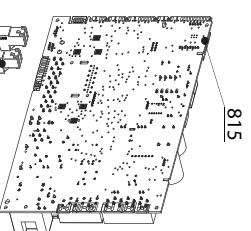
16/10/2019 --->



824

16/10/2019 --->

800



815

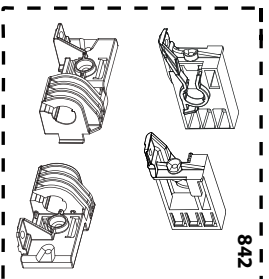
881

809

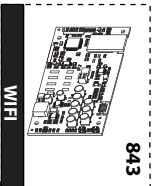
801



825



842



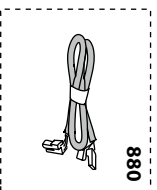
843

WiFi

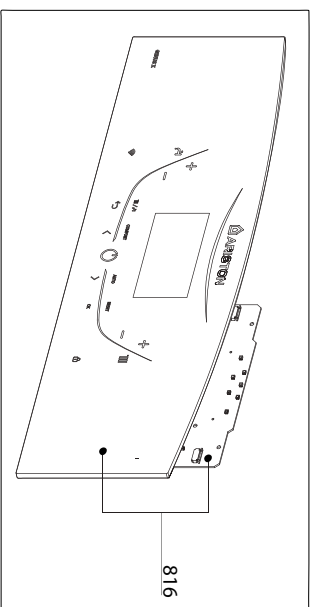


879

SYSTEM

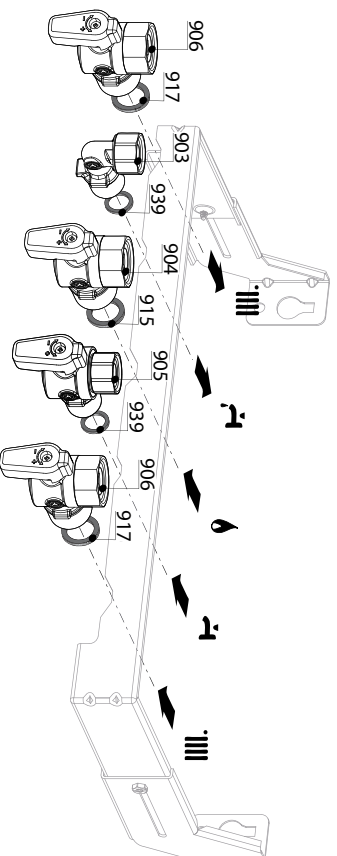


880



816

900



910

906

917

903

939

904

915

905

939

906

917

5000

5020

Accessories  
Options  
Opzioni  
Accessorio  
Zubehor  
Opties



Description	Manf. Pt. N	Type	<div style="display: flex; justify-content: space-between; font-size: 8px;"> <span>ALTEA ONE 24</span> <span>ALTEA ONE 30</span> <span>ALTEA ONE 35</span> <span>GENUS ONE</span> <span>GENUS ONE (NET) 24</span> <span>GENUS ONE (NET) 30</span> <span>GENUS ONE (NET) 35</span> <span>GENUS ONE S1/S1.12</span> <span>GENUS ONE S1/S1.18</span> <span>GENUS ONE S1/S1.24</span> <span>GENUS ONE S1/S1.30</span> <span>GENUS ONE S1/S1.35</span> </div>																		From	to
			1	2	3	4	5	6	7	8	9	10	11	12	13	14	15	16	17	18		
<b>0800 ELECTRICAL BOX</b>																						
0809 ЗАГЛУШКА (PCD TOOL ACCESS)	998382		●	●	●	●	●	●	●	●	●	●	●	●	●	●	●	●	●		10/19	
0814 КОРПУС БЛОКА УПРАВЛЕНИЯ (FRONT)	65116544		●	●	●	●	●	●	●	●	●	●	●	●	●	●	●	●	●		10/19	
КОРПУС БЛОКА УПРАВЛЕНИЯ (FRONT)	65119642		●	●	●	●	●	●	●	●	●	●	●	●	●	●	●	●	●	11/19		
0815 ОСНОВНАЯ ПЛАТА	65116545-03		●	●	●	●	●	●	●	●	●	●	●	●	●	●	●	●	●			
0816 ПЛАТА ДИСПЛЕЯ	65116788-02		●	●	●	●	●	●	●	●	●	●	●	●	●	●	●	●	●			
ПЛАТА ДИСПЛЕЯ	65116789-02		●	●	●	●	●	●	●	●	●	●	●	●	●	●	●	●	●			
0824 КОРПУС БЛОКА УПРАВЛЕНИЯ (REAR)	65119643		●	●	●	●	●	●	●	●	●	●	●	●	●	●	●	●	●	11/19		
КОРПУС БЛОКА УПРАВЛЕНИЯ (REAR)	65116547		●	●	●	●	●	●	●	●	●	●	●	●	●	●	●	●	●		10/19	
0825 МАНОМЕТР 0-4 BAR D27MM KPL.	65114200		●	●	●	●	●	●	●	●	●	●	●	●	●	●	●	●	●			
0826 КОРПУС БЛОКА УПРАВЛЕНИЯ (LOWER PART)	65119736		●	●	●	●	●	●	●	●	●	●	●	●	●	●	●	●	●	11/19		
0842 ПЕТЛЯ КОРПУСА БЛОКА УПРАВЛЕНИЯ	65119641		●	●	●	●	●	●	●	●	●	●	●	●	●	●	●	●	●			
0843 ПЛАТА WI-FI (WIFI-REM3)	65118649		●	●	●	●	●	●	●	●	●	●	●	●	●	●	●	●	●			
0879 ДАТЧИК БОЙЛЕРА	60000454		●	●	●	●	●	●	●	●	●	●	●	●	●	●	●	●	●			
0880 КАБЕЛЬ 3-Х ХОДОВОГО КЛАПАНА	65116584		●	●	●	●	●	●	●	●	●	●	●	●	●	●	●	●	●			
КАБЕЛЬ 3-Х ХОДОВОГО КЛАПАНА	65116815		●	●	●	●	●	●	●	●	●	●	●	●	●	●	●	●	●			
КАБЕЛЬ ВЕНТИЛЯТОРА	65116579		●	●	●	●	●	●	●	●	●	●	●	●	●	●	●	●	●			
КАБЕЛЬ ЭЛЕКТРОДА РОЗЖИГА	65116583		●	●	●	●	●	●	●	●	●	●	●	●	●	●	●	●	●			
КАБЕЛЬ ДИСПЛЕЯ (5 WIRES BLUES)	60000746		●	●	●	●	●	●	●	●	●	●	●	●	●	●	●	●	●			
КАБЕЛЬ ЗАЗЕМЛЕНИЯ	65104286		●	●	●	●	●	●	●	●	●	●	●	●	●	●	●	●	●			
КАБЕЛЬ ПИТАНИЯ 240V	60001619		●	●	●	●	●	●	●	●	●	●	●	●	●	●	●	●	●			
КАБЕЛЬ ГАЗОВОГО КЛАПАНА	65116580		●	●	●	●	●	●	●	●	●	●	●	●	●	●	●	●	●			
КАБЕЛЬ ДАТЧИКА ТЕМПЕРАТУРЫ NTC	65116717		●	●	●	●	●	●	●	●	●	●	●	●	●	●	●	●	●			
КАБЕЛЬ НАСОСА TACO	65117069	TACO	●	●	●	●	●	●	●	●	●	●	●	●	●	●	●	●	●			
КАБЕЛЬ ПЛАТЫ WI-FI	65115826		●	●	●	●	●	●	●	●	●	●	●	●	●	●	●	●	●			
0881 КОННЕКТОР 2P	65111933		●	●	●	●	●	●	●	●	●	●	●	●	●	●	●	●	●			
КОННЕКТОР 3P (x5)	65111934-01		●	●	●	●	●	●	●	●	●	●	●	●	●	●	●	●	●			
<b>0900 JIG PLATE &amp; PIPE FITTING</b>																						
0903 ПАТРУБОК ГВС	60000891		●	●	●	●	●	●	●	●	●	●	●	●	●	●	●	●	●			
0904 КРАН ГАЗА	60000898		●	●	●	●	●	●	●	●	●	●	●	●	●	●	●	●	●			
0905 КРАН ХОЛОДНОЙ ВОДЫ	60000895		●	●	●	●	●	●	●	●	●	●	●	●	●	●	●	●	●			
0906 КРАН ПОДАЧИ/ВОЗВРАТА ТЕПЛОНОСИТЕЛЯ	60000885		●	●	●	●	●	●	●	●	●	●	●	●	●	●	●	●	●			
0910 КРОНШТЕЙН	60000625		●	●	●	●	●	●	●	●	●	●	●	●	●	●	●	●	●			
0915 ПРОКЛАДКА КРАНА ГАЗА	65119354		●	●	●	●	●	●	●	●	●	●	●	●	●	●	●	●	●			
0917 ПЛОСКАЯ ПРОКЛАДКА D:24-17-1.5	60061855-19		●	●	●	●	●	●	●	●	●	●	●	●	●	●	●	●	●			
0939 ПЛОСКАЯ ПРОКЛАДКА D:18.4-12.2-1.5	60061855-14		●	●	●	●	●	●	●	●	●	●	●	●	●	●	●	●	●			
<b>5000 ACCESSORIES</b>																						
5020 ОГРАНИЧИТЕЛЬ ПРОТОКА (KIT)	65116836		●	●	●	●	●	●	●	●	●	●	●	●	●	●	●	●	●			
КОМНАТНЫЙ ДАТЧИК CUBE (KIT)	65116718		●	●	●	●	●	●	●	●	●	●	●	●	●	●	●	●	●			
КОМНАТНЫЙ ДАТЧИК CUBE S NET (KIT)	65116700		●	●	●	●	●	●	●	●	●	●	●	●	●	●	●	●	●			

## LIST OF THE ABBREVIATIONS

HW .....	: Hot water.
CW .....	: Cold water.
C .....	: Ceramic resistance (normal heating).
Ca .....	: Ceramic resistance (accelerated heating)
TP .....	: Immersion heater.
1F .....	: With fittings.
2F .....	: Without fittings.
3F .....	: With fittings and another outlet connection.
AMI .....	: With mixing valve.
SMI .....	: Without mixing valve.
PUISS .....	: Power of th appliance.
PN .....	: Appliance with normal pression.
LP .....	: Appliance with low pression.
PV .....	: Appliance with variable power.
PF .....	: Appliance with fixed power.

## IDENTIFICATION PLATE

### SERIAL NUMBER

<b>10 Characters :</b>	04 05 125 011	
		Sequential number
		Manufacturing day
		Year of manufacture
<b>11 Characters :</b>	1 95 065004 - 31	
Month of manufacture :		Technical number of the appliance
from 1 to 9 → Jan. to Sep.,		Sequential number
O → Oct., N → Nov.,		Year of manufacture
D → Dec.		
<b>19 Characters :</b>	08 05 0013199 900640031	
Year of manufacture		Product reference
Month of manufacture		Sequential number
<b>20 Characters :</b>	3675007 XX 2 07 070 00315	
Product reference		Sequential number
Millenium of manufacture		Manufacturing day
		Year of manufacture
<b>21 Characters :</b>	3675007 XX 07 070 0000315	
Product reference		Sequential number
Year of manufacture		Manufacturing day